



Monthly Statistics of Building Materials and Components

February 2009

No. 408

NOTES

In tables where figures have been rounded to the nearest final digit, there may be an apparent slight discrepancy between the sum of the constituent items and the total as shown.

Symbols. The following symbols have been used throughout.

.. = not available

(P) = provisional

- = nil or negligible

(R) = revised

All figures are subject to revision.

A National Statistics publication

National Statistics are produced to high professional standards set out in the National Statistics Code of Practice. They undergo regular quality assurance reviews to ensure they meet customer needs.

Unless otherwise stated, the statistics published in this volume have been collected by the Office for National Statistics on behalf of the Department for Business, Enterprise & Regulatory Reform.

Further information about the contents of this publication can be obtained from Construction Market Intelligence, Bay 616, 1, Victoria Street,
London, SW1H 0ET;
Telephone : 020 - 7215 - 1555 Fax : 020 - 7215 - 1304
E-mail : materialstats@berr.gsi.gov.uk.

URN 09/313b

4 March 2009

ii

CONTENTS

	<u>Page</u>
Table 1 : Construction Material Price Indices	1
Table 2 : Price Indices of Construction Materials – monthly	2 & 3
Table 3 : Price Indices of Construction Materials – annual averages	4
Table 4 : Sales of Sand and Gravel in Great Britain	5
Table 5 : Sales of Sand and Gravel by English Regions, Wales and Scotland	6 & 7
Table 6 : Sales of Sand and Gravel by English and Welsh Counties and Scottish Regions	8 & 9
Table 7 : Slate : Production, Deliveries and Stocks	10
Chart 1 : Deliveries of Sand & Gravel and Ready-Mixed Concrete	11
Table 8 : Cement and Clinker : Production, Deliveries and Stocks	12
Chart 2 : Deliveries of Bricks, Concrete Building Blocks and Cement	13
Table 9 : Bricks : Production, Deliveries and Stocks for Great Britain	14 & 15
Table 10 : Bricks : Production, Deliveries and Stocks by English Regions, Wales and Scotland	16 to 19
Table 11 : Concrete Building Blocks : Production, Deliveries and Stocks for Great Britain	20 & 21
Table 12 : Concrete Building Blocks : Production, Deliveries and Stocks by English Regions, Wales and Scotland	22 & 23
Table 13 : Concrete Roofing Tiles; Fibre Cement Products; Ready-Mixed Concrete	24
Chart 3 : Comparison of Imports and Exports	25
Table 14 : Value of Overseas Trade in Selected Materials and Components for Constructional Use : Imports (cif) and Exports (fob)	26 to 35

Table 1: Construction Material Price Indices

United Kingdom	2005 = 100					
	2004	2005	2006	2007	2008	2009
(a) New Housing						
January	94.0	97.5	101.6	109.8	115.3	119.7 (P)
February	94.5	98.8	102.6	111.7	116.8	
March	95.3	99.3	103.4	112.4	117.5	
April	96.0	99.8	103.6	112.3	118.2	
May	96.5	100.4	104.6	113.7	119.0	
June	97.0	100.4	105.8	114.4	118.7	
July	97.8	100.7	106.5	115.2	120.0	
August	97.4	100.7	107.6	116.3	120.5	
September	97.3	100.3	107.7	116.3	120.4	
October	97.2	100.3	108.8	116.4	121.1	
November	97.1	100.6	109.5	116.0	120.6 (P)	
December	97.3	101.2	110.0	115.8	120.6 (P)	
Annual Average	96.5	100.0	106.0	114.2	119.1 (P)	
(b) Other New Work						
January	89.6	98.9	100.5	110.1	114.3	124.1 (P)
February	90.2	100.7	101.7	111.7	116.2	
March	91.6	100.8	102.7	112.1	117.3	
April	93.2	101.1	103.1	112.0	119.2	
May	94.8	100.7	104.4	112.9	121.6	
June	96.5	100.4	105.6	113.3	123.7	
July	97.4	100.2	106.8	113.9	126.4	
August	97.8	99.7	108.3	114.8	127.7	
September	98.0	99.2	108.7	114.4	128.6	
October	98.5	99.1	109.5	114.5	129.3	
November	98.2	99.4	109.6	114.0	129.1 (P)	
December	98.2	99.8	109.9	113.6	127.2 (P)	
Annual Average	95.3	100.0	105.9	113.1	123.4 (P)	
(c) Repair and Maintenance						
January	93.5	98.1	101.6	111.0	116.0	122.5 (P)
February	94.1	99.3	102.4	112.9	117.2	
March	94.7	99.8	103.5	113.5	117.9	
April	95.5	100.0	103.9	113.3	119.2	
May	96.1	100.4	104.8	114.4	120.4	
June	96.9	100.2	106.1	115.3	121.2	
July	97.4	100.3	106.9	116.0	122.9	
August	97.5	100.3	108.5	116.9	123.7	
September	97.5	99.9	109.0	117.2	123.8	
October	97.4	100.1	110.2	117.2	124.7	
November	97.4	100.5	110.8	116.6	124.1 (P)	
December	97.9	101.1	111.4	116.4	123.8 (P)	
Annual Average	96.3	100.0	106.6	115.1	121.2 (P)	
(d) All Work						
January	91.9	98.5	101.2	110.6	115.3	123.3 (P)
February	92.4	99.7	102.1	112.3	116.9	
March	93.4	100.1	103.1	112.8	117.9	
April	94.5	100.3	103.5	112.6	119.2	
May	95.7	100.5	104.7	113.8	121.0	
June	96.8	100.3	105.8	114.3	122.3	
July	97.5	100.3	106.9	114.7	124.4	
August	97.7	100.2	108.4	115.8	125.7	
September	97.8	99.7	108.7	116.0	126.2	
October	98.0	99.7	109.8	116.0	126.9	
November	97.8	100.2	110.2	115.5	126.5 (P)	
December	98.0	100.6	110.6	115.2	125.5 (P)	
Annual Average	96.0	100.0	106.3	114.1	122.3 (P)	

Note: These indices are weighted averages of Producer Price Indices. They do not include electrical or mechanical engineering materials.

Source ONS/BERR

PRICES

Table 2: Price Indices of Construction Materials

United Kingdom

	2008						
	Jan	Feb	Mar	Apr	May	Jun	Jul
AGGREGATES							
Coated roadstone - including levy	125.7	127.3	127.9	128.0	127.9	130.8	128.6
- excluding levy	125.8	127.6	128.2	127.3	127.3	130.2	128.0
Crushed rock - including levy	95.7	97.6	98.8	107.6	108.2	110.2	105.7
- excluding levy	94.4	96.7	98.8	103.9	105.1	108.2	102.1
Sand & gravel - including levy	114.1	114.0	113.9	118.1	118.6	116.9	117.5
- excluding levy	114.7	114.8	114.6	115.9	116.9	114.6	115.5
CEMENT AND CONCRETE							
Cement	123.0	127.1	127.6	127.0	128.0	127.3	128.0
Ready-mixed concrete	113.3	112.3	112.7	112.0	105.6	111.8	115.2
Plasterboard etc	104.9	105.2	104.8	104.7	104.8	104.4	104.6
Pre-cast concrete products	112.7	112.7	114.1	114.3	114.6	114.4	113.2
of which : Blocks, bricks, tiles & flagstones	113.9	113.9	115.9	116.1	116.4	116.2	114.0
Concrete reinforcing bars	122.1	127.3	136.3	146.7	158.1	174.9	191.7
Fibre Cement Products *	120.9	120.9	120.9	120.9	120.9	123.9	124.9
CLAY PRODUCTS							
All Bricks	114.4	115.1	113.3	113.6	104.8	107.0	110.3
Ceramic tiles *	85.3	85.3	85.3	85.3	80.8	80.8	82.4
Ceramic sanitaryware *	117.6	117.5	117.0	117.6	117.2	118.1	120.0
TIMBER AND JOINERY							
Imported softwood	133.7	133.0	130.0	126.9	124.7	123.9	121.7
Imported plywood *	112.7	114.1	115.9	116.5	118.4	112.2	111.4
Sawn wood	129.8	129.6	130.0	130.1	130.5	129.8	129.5
Particle Board	114.4	113.7	113.6	113.6	115.8	114.4	114.3
Builders woodwork	111.6	112.5	112.1	111.7	112.1	112.2	111.2
of which : Doors & windows	111.4	115.9	114.8	114.9	115.4	115.5	115.6
METAL PRODUCTS							
Fabricated structural steel	121.6	121.9	123.5	129.4	130.7	139.3	146.2
Doors & windows	81.8	81.8	82.3	84.7	85.1	87.5	90.0
Screws etc*	105.8	105.8	105.8	105.8	105.8	106.8	106.8
Other Builders Ironmongery *	107.3	107.3	107.3	107.3	107.3	107.3	109.4
Central heating boilers *	107.1	104.8	104.8	104.8	104.4	104.8	106.5
Central heating pumps *	115.9	115.9	119.8	119.9	121.8	121.8	121.8
Taps and Valves for sanitaryware *	130.0	130.0	130.0	131.5	131.6	131.6	131.6
Metal sanitaryware *	105.0	105.0	105.0	105.0	105.0	105.2	105.2
PLASTIC PRODUCTS							
Pipes and fittings (rigid)	114.0	114.6	113.2	114.7	116.8	116.8	116.8
Pipes and fittings (flexible)	111.0	110.8	111.2	111.2	108.1	108.0	108.0
Sanitaryware *	111.4	111.4	111.4	111.4	111.6	111.6	111.6
Doors & windows	105.2	105.4	105.4	105.4	105.5	105.7	105.8
Floorcovering *	114.9	116.2	114.4	119.5	119.5	120.3	122.6
OTHER BUILDING MATERIALS							
Asphalt products *	127.0	136.8	135.3	135.3	135.3	138.4	141.8
Insulating materials (thermal or acoustic)	106.3	108.1	104.6	105.7	105.5	105.9	105.7
Paint (aqueous) *	110.4	110.4	112.2	112.3	113.2	113.2	113.2
Paint (non-aqueous)	99.6	100.5	113.0	112.9	112.9	113.2	112.3
Lighting equipment for buildings	101.6	101.6	102.0	102.0	102.0	102.0	102.0
Lighting equipment for roads	101.6	102.2	102.2	102.8	104.0	105.1	107.1
Electric water heaters *	119.6	119.6	120.0	122.6	122.7	122.8	122.9
Kitchen furniture	101.5	100.8	101.8	102.3	102.4	102.4	105.9

Notes : 1. These indices, which are compiled by the Office for National Statistics, are a selection of producer price indices.

The complete list is available online at www.statistics.gov.uk, by searching for the reference MM22.

*.The Office for National Statistics state that these Indices are based on relatively few quotes and in the long term should not be relied upon for contractual purposes.

2005=100

Aug	Sep	Oct	Nov	Dec	2009 Jan	
				(P)	(P)	
						AGGREGATES
131.0	129.4	134.9	134.6	133.7	133.0	Coated roadstone - including levy
130.5	128.9	134.6	134.2	133.3	132.8	- excluding levy
106.3	104.5	103.5	103.5	99.5	98.6	Crushed rock - including levy
103.4	101.0	99.8	99.3	94.5	94.0	- excluding levy
117.3	119.6	117.2 (P)	120.4 (P)	121.8	120.8	Sand & gravel - including levy
115.3	118.1	115.2 (P)	119.0 (P)	120.5	119.9	- excluding levy
						CEMENT AND CONCRETE
130.0	130.8	130.7 (P)	130.4 (P)	130.6	137.3	Cement
115.1	117.0	114.2	116.3	115.2	114.2	Ready-mixed concrete
105.6	104.5	104.4	104.1	104.7	113.3	Plasterboard etc
114.6	115.6	115.4 (P)	115.4 (P)	115.8	117.5	Pre-cast concrete products
114.5	116.1	115.8	115.9	116.6	119.4	of which : Blocks, bricks, tiles & flagstones
188.8	185.2	169.5	166.3 (P)	149.8	138.6	Concrete reinforcing bars
125.0	125.0	127.9	129.7	130.0	130.0	Fibre Cement Products *
						CLAY PRODUCTS
105.2	105.1	106.4	104.4	107.5	109.2	All Bricks
77.2	77.2	77.2 (P)	78.3 (P)	78.3	82.3	Ceramic tiles *
122.4	122.4	122.8	122.8	122.8	130.9	Ceramic sanitaryware *
						TIMBER AND JOINERY
119.9	119.1	118.1	116.3	115.6	115.7	Imported softwood
116.5	118.1	133.0	136.8	142.3	137.2	Imported plywood *
127.5	127.4	124.5	122.4	122.6	118.0	Sawn wood
114.1	113.9	113.0	112.1	112.5	112.5	Particle Board
111.6	116.5	116.1	115.8	118.3	118.2	Builders woodwork
116.6	118.6	118.1	118.3	125.0	124.6	of which : Doors & windows
						METAL PRODUCTS
151.7	157.7	152.4	152.0 (P)	131.4	123.9	Fabricated structural steel
90.0	89.9	90.1	90.4	90.3	90.4	Doors & windows
108.1	108.3	106.8	106.8	106.8	111.5	Screws etc *
109.4	110.6	111.2	109.0	109.0	109.7	Other Builders Ironmongery *
107.6	107.6	106.9	108.1	108.5	108.9	Central heating boilers *
121.8	120.8	120.8	120.8	120.8	120.8	Central heating pumps *
136.4	143.6	143.7	149.6	149.6	152.5	Taps and Valves for sanitaryware *
105.2	107.8	108.6	109.0	109.0	110.5	Metal sanitaryware *
						PLASTIC PRODUCTS
122.9	122.9	121.7	121.6	120.9	121.5	Pipes and fittings (rigid)
109.0	114.5	131.3	131.3	129.4	129.4	Pipes and fittings (flexible)
112.6	112.6	112.6	112.6	112.6	113.6	Sanitaryware *
105.8	106.7	107.2	108.2	108.4	108.7	Doors & windows
121.4	124.2	124.5	126.6	124.0	124.4	Floorcovering *
						OTHER BUILDING MATERIALS
144.5	146.2	146.7	149.6	148.4	148.4	Asphalt products *
105.4	104.1	104.6	105.2	105.8	105.4	Insulating materials (thermal or acoustic)
113.2	113.2	113.2	113.2	114.4	115.2	Paint (aqueous) *
112.1	109.3	110.3	112.2	112.2	112.7	Paint (non-aqueous)
100.6	102.0	102.8	104.0	104.8	105.9	Lighting equipment for buildings
107.1	107.1	107.0	107.6	108.9	111.4	Lighting equipment for roads
123.1	123.3	123.9	123.8	123.8	123.8	Electric water heaters *
105.2	103.7	105.9 (P)	104.9 (P)	105.8	106.3	Kitchen furniture

Source : ONS

PRICES

Table 3: Price Indices of Construction Materials - Annual Averages

United Kingdom	2005=100					
	2003	2004	2005	2006	2007	2008
						(P)
AGGREGATES						
Coated roadstone - old						
- including levy	95.6	95.8	100.0	108.2	113.8	130.0
- excluding levy	94.6	94.9	99.9	107.5	113.7	129.7
Crushed rock - old						
- including levy	102.7	103.2	98.6	96.1	95.2	103.4
- excluding levy	105.4	105.7	98.4	94.5	93.6	100.6
Sand & gravel - old						
- including levy	93.9	98.6	101.2	105.3	109.9	117.5
- excluding levy	92.1	97.6	100.9	105.7	110.9	116.3
CEMENT AND CONCRETE						
Cement	92.2	92.6	100.0	108.8	114.7	128.4
Ready-mixed concrete	95.8	94.5	100.6	107.7	106.7	113.4
Plasterboard etc	94.3	96.5	100.1	99.3	101.8	104.7
Pre-cast concrete products	91.3	95.7	100.0	102.3	110.6	114.4
of which: Blocks, bricks, tiles & flagstones	91.9	95.6	100.0	103.3	112.8	115.4
Concrete re-inforcing bars	75.2	105.9	100.0	112.9	129.8	159.7
Fibre Cement Products	95.1	96.3	100.1	106.7	116.8	124.2
CLAY PRODUCTS						
All Bricks	89.0	92.3	98.0	104.3	111.1	108.9
Ceramic tiles	95.0	96.1	98.7	102.0	84.8	81.1
Ceramic sanitaryware	96.2	97.0	100.1	102.5	112.6	119.9
TIMBER AND JOINERY						
Imported Softwood	104.9	103.3	100.3	107.9	133.6	123.6
Imported Plywood	86.4	100.1	100.1	100.8	106.5	120.7
Sawn Wood	89.9	96.9	100.0	103.1	122.0	127.8
Particle Board	94.5	95.6	99.4	102.6	112.7	113.8
Builders woodwork	90.6	94.1	99.4	102.2	108.0	113.5
of which						
Doors & windows	90.3	97.0	99.7	101.7	108.7	116.7
METAL PRODUCTS						
Fabricated structural steel	66.9	89.1	100.0	99.8	118.1	138.2
Doors & windows	93.6	96.6	101.4	101.2	87.5	87.0
Screws etc	73.8	76.7	94.4	106.1	105.9	106.6
Nails etc	92.1	94.5	100.0
Other builders' ironmongery	100.6	97.7	99.9	102.4	105.3	108.5
Central heating boilers	95.7	97.4	99.9	102.3	105.0	106.3
Central heating pumps	98.1	99.0	100.7	108.2	114.5	120.2
Taps & valves (domestic)	84.5	85.5	98.7
Metal sanitaryware	100.0	96.0	100.0	103.5	108.3	106.3
Copper pipes	80.4	95.6	108.5	168.1	163.2	154.1
PLASTIC PRODUCTS						
Pipes and fittings (rigid)	93.1	93.9	99.2	103.9	112.2	118.1
Pipes and fittings (flexible)	93.9	95.2	99.8	104.4	110.6	115.3
Sanitaryware	96.0	98.1	100.2	100.9	102.6	112.0
Doors & windows	95.5	98.1	99.9	101.3	103.5	106.2
Floor covering	98.2	97.7	100.1	107.8	109.8	120.7
OTHER BUILDING MATERIALS						
Worked monumental or building stone	86.6	96.7	100.0	106.3
Asphalt products	80.4	89.9	98.4	120.6	132.2	140.4
Insulating materials (thermal or acoustic)	92.8	94.2	99.9	102.5	106.0	105.6
Paint (aqueous)	94.2	95.0	99.8	101.7	104.6	112.7
Paint (non-aqueous)	98.2	96.7	99.7	100.8	102.6	110.0
Lighting equipment for buildings	99.9	100.7	100.1
Lighting equipment for roads	81.9	85.5	99.5	98.7	100.9	105.2
Electric heating apparatus	93.7	99.4	100.0	101.8	105.4	112.0
Electric water heaters	77.3	88.9	100.4	111.6	119.8	122.3
Kitchen furniture	105.2	106.5	100.0	96.7	99.7	103.6

Source : ONS

Note : These indices, which are compiled by the Office for National Statistics, are a selection of producer price indices. The complete list published monthly by HMSO in the Business Monitor MM22.

MINING AND QUARRYING

Table 4 : Sales of Sand and Gravel in Great Britain

Great Britain Thousand tonnes

		Sand		Gravel	Sand & Gravel	Sand, Gravel & Hoggin	Sand & Gravel	of which
		for Building	for Concreting	for Concreting & other uses	for Coating	for Fill	Total	Marine-Dredged
1998		11,164	29,215	29,547	3,189	12,662	85,777	13,139
1999		10,664	29,276	28,735	2,184	10,968	81,827	13,468
2000		12,105	30,128	30,355	2,150	13,127	87,865	14,356
2001		13,926	33,675	36,799	2,596	10,460	97,456	13,611
2002		2,583	6,945	7,180	502	1,373	18,583	2,879
2003		11,515	31,412	31,739	1,493	6,594	82,753	12,249
2004		11,017	32,366	30,184	1,380	6,399	81,346	12,996
2005		12,419	30,704	30,648	1,557	5,173	80,501	13,025
2006		9,499	29,893	31,963	2,346	4,195	77,896	13,974
2007		8,649	29,803	31,114	1,695	4,254	75,515	13,777
2008 (P)		8,890	28,929	28,242	.	.	74,631	12,548
2002	Q4	2,583	6,945	7,180	502	1,373	18,583	2,879
2003	Q1	2,681	7,376	7,436	376	1,691	19,560	2,841
	Q2	3,294	8,441	8,803	343	1,802	22,683	3,234
	Q3	3,117	8,310	8,481	379	1,761	22,048	3,324
	Q4	2,423	7,285	7,019	395	1,340	18,462	2,850
2004	Q1	2,672	7,599	6,703	283	1,454	18,711	2,673
	Q2	3,021	8,649	8,214	315	1,770	21,969	3,639
	Q3	2,889	8,528	8,230	372	1,632	21,651	3,563
	Q4	2,435	7,590	7,037	410	1,543	19,015	3,121
2005	Q1	3,141	7,180	7,271	376	986	18,954	3,040
	Q2	3,467	8,490	8,226	439	1,553	22,175	3,519
	Q3	3,246	8,054	8,201	398	1,422	21,321	3,491
	Q4	2,565	6,980	6,950	344	1,212	18,051	2,975
2006	Q1	2,189	7,100	7,058	523	919	17,789	2,927
	Q2	2,582	8,126	9,032	623	1,174	21,537	4,531
	Q3	2,603	7,725	8,602	640	1,144	20,714	3,498
	Q4	2,125	6,942	7,271	560	958	17,856	3,018
2007	Q1	2,081	6,919	7,242	443	904	17,589	3,177
	Q2	2,305	7,762	8,202	432	1,179	19,880	3,596
	Q3	2,304	7,829	8,191	398	1,162	19,884	3,675
	Q4	1,959	7,293	7,479	422	1,009	18,162	3,329
2008	Q1	2,151	7,156	7,286	379	1,180	18,152	3,035
	Q2	2,385	7,724	7,668	456	2,041	20,274	3,541
	Q3	2,279	7,644	7,091	.	.	19,341	3,337
	Q4 (P)	2,075	6,405	6,197	.	.	16,864	2,635

Note : The figures above are from a quarterly sample inquiry whereas those below are from the Annual Minerals Raised Inquiry, a census. The two inquiries differ because some respondents are only able to provide estimated information for the quarterly inquiry.

1997	11,397	30,130	28,718	3,940	12,181	86,366	12,004
1998	10,840	30,244	31,003	2,970	10,911	85,968	12,952
1999	11,356	31,730	31,614	2,585	10,924	88,209	13,424
2000	11,758	31,167	31,797	2,461	12,051	89,234	14,356
2001	11,515	31,656	35,135	2,257	7,647	88,210	13,611
2002	11,190	31,224	32,434	2,031	5,842	82,721	12,832
2003	11,851	31,411	30,236	1,766	4,957	80,221	12,131
2004	10,688	32,529	32,346	2,437	8,058	86,057	12,996
2005	11,558	29,848	32,163	2,172	6,651	82,392	13,024
2006	9,907	29,815	31,002	2,648	6,869	80,242	13,974
2007	9,877	30,202	29,350	2,636	6,436	78,501	13,777

MINING AND QUARRYING

Table 5 : Sales of Sand and Gravel by Standard region, Wales and Scotland

	Sand		Gravel	Sand & Gravel	Sand, Gravel & Hoggin	Sand & Gravel	of which
	for Building	for Concreting	for Concreting & other uses	for Coating	for Fill	Total	Marine-Dredged
<u>(a) Q3 2008</u>							
North East	48	25
Yorkshire & the Humber	117	464	438	1	108	1,128	20
North West	272	406	..	29	58
West Midlands	231	1,037	1,029	2,465	0
East Midlands	179	868	691	26	68	1,832	0
East of England	245	1,151	1,330	135	719	3,580	202
South East	600	1,550	2,141	42	247	4,580	2,354
South West	213	..	504	..	145	1,717	218
Wales	179	291	110	691	318
Scotland	195	858	650	136	278	2,117	0
Great Britain	2,279	7,644	7,091	19,341	3,337
of which marine-dredged	199	1,578	1,467	3,337	
<u>(b) Q3 2007</u>							
North East	37	235	98	31	29	430	199
Yorkshire & the Humber	159	577	599	0	184	1,519	25
North West	218	434	128	25	104	909	106
West Midlands	281	947	1,142	43	48	2,461	0
East Midlands	205	949	885	47	51	2,137	0
East of England	282	1,132	1,349	113	322	3,198	209
South East	460	1,817	2,515	36	175	5,003	2,617
South West	262	825	579	17	134	1,817	213
Wales	222	258	145	3	38	666	306
Scotland	178	655	751	83	77	1,744	0
Great Britain	2,304	7,829	8,191	398	1,162	19,884	3,675
of which marine-dredged	246	1,648	1,725	3	53	3,675	

Note : Regions refer to Government Office Regions

MINING AND QUARRYING

Thousand tonnes

	Sand		Gravel	Sand & Gravel	Sand, Gravel & Hoggin	Sand & Gravel	of which
	for Building	for Concreting	for Concreting & other uses	for Coating	for Fill	Total	Marine-Dredged
(c) Annual 2007							
North East	142	880	145
Yorkshire & the Humber	596	2,015	2,134	0	480	5,225	131
North West	838	1,679	..	94	280
West Midlands	1,076	3,665	4,363	..	189	9,463	0
East Midlands	818	3,593	3,253	..	209	8,065	0
East of England	1,124	4,153	5,108	445	1,140	11,970	809
South East	1,658	7,018	9,763	183	623	19,245	9,845
South West	898	3,257	2,358	80	574	7,167	782
Wales	822	14	163	2,462	1,152
Scotland	677	2,579	2,818	408	451	6,933	0
Great Britain	8,649	29,803	31,114	1,695	4,254	75,515	13,777
of which marine-dredged	909	6,176	6,507	23	162	13,777	
(d) Annual 2006							
North East	43	596	520	76	66	1,301	394
Yorkshire & the Humber	516	2,067	2,243	19	251	5,096	143
North West	754	1,641	544	86	327	3,352	194
West Midlands	1,116	3,875	4,440	189	169	9,789	0
East Midlands	779	4,120	3,523	92	292	8,806	0
East of England	1,199	4,851	5,614	421	1,086	13,171	1,547
South East	1,886	6,814	9,556	172	649	19,077	9,932
South West	1,204	1,833	2,264	509	414	6,224	677
Wales	868	1,166	568	8	175	2,785	1,087
Scotland	1,134	2,930	2,691	774	766	8,295	0
Great Britain	9,499	29,893	31,963	2,346	4,195	77,896	13,974
of which marine-dredged	931	5774	7155	6	108	13,974	

Note : Regions refer to Government Office Regions

MINING AND QUARRYING

Table 6 : Sales of Sand and Gravel by English & Welsh County and Scottish Region

Thousand tonnes

	2007			2008		
	Quarter 2	Quarter 3	Quarter 4	Quarter 1	Quarter 2	Quarter 3
NORTH EAST	449	430
Northumberland	211	167	146		146	154
Tyne and Wear *	71	78	58	74	61	45
Durham	167	185	(..
Cleveland *			(126	119
YORKSHIRE & THE HUMBER	1,324	1,519	1,259	1,224	1,307	1,128
North Yorkshire	811	978	(700	663	739	643
West Yorkshire			(95	81	..	72
South Yorkshire	194) 541	(190	196	..	184
Humberside *	319)	(274	284	268	229
NORTH WEST	888	909	..	855	911	..
Cumbria	294	174) 163	178	186	180
Lancashire*		126)	88	82
Merseyside *) 87) 229	(76	..	91) 263
Greater Manchester) 134)	(109	185	190)
Cheshire	373	380	349	334	356	333
WEST MIDLANDS	2,512	2,461	2,310	2,340	2,496	2,465
Shropshire	(1,765	(223	..	207	217	216
Staffordshire	((1,503	1,407	1,432	1,524	1,497
West Midlands	(499	(158	..	144	146	145
Warwickshire	((330	308	300	334	333
Hereford & Worcester	248	247	237	257	275	274
EAST MIDLANDS	2,106	2,137	1,898	1,934	1,897	1,832
Derbyshire	305	314	280	267	262	257
Nottinghamshire	999) 1,008	(646	672	658	634
Leicestershire)	(..	..	255	253
Northamptonshire	802	112	88	84
Lincolnshire		703	623	651	634	604
EAST OF ENGLAND	3,113	3,198	2,880	2,915	3,617	3,580
Cambridgeshire	682	711	639	650	764	757
Norfolk) 886	894	(481	505	675) 1,107
Suffolk *)		(..)
Essex *	950	983	890	859	1,054	1,024
Bedfordshire) 595	610	(357	356	436) 692
Hertfordshire)		(..)
SOUTH EAST	5,074	5,003	4,633	4,327	4,870	4,580
Buckinghamshire	228	216	209	202	216	212
Oxfordshire	285	272	252	271	303	288
Berkshire	339	322	316	214	228	220
Greater London *	1,260	1,245	1,113	992	1,161	1,125
Surrey	436	415	387	322	367	335
Kent *	1,151	1,175	1,127	1,094	1,236	1,128
Sussex East *) 423	403	(..) 424
Sussex West *)		(242	271	..)
Hampshire *	(952	955	(819	782	848) 848
Isle of Wight *	((..)

Note : Regions refer to Government Office Regions

* Includes marine-dredged.

MINING AND QUARRYING

Thousand tonnes

	2007			2008		
	Quarter 2	Quarter 3	Quarter 4	Quarter 1	Quarter 2	Quarter 3
SOUTH WEST	1,891	1,817	1,764	1,542	1,812	1,717
Gloucestershire	401	368	341	308	319	311
Wiltshire) 418	403	(228	254	276)	441
Avon *)		(..)	..
Somerset *	(24	34
Dorset *	(427	409	427
Devon *	(313	302	280)	271	313	456
Cornwall	(308	301	335)	
ENGLAND	17,357	17,474	15,921	15,670	17,324	16,533
WALES	617	666	629	640	..	691
Clwyd	207	232	..	253	283	244
Gwynedd *	62	67	59)	195
Powys	111	0	0	0	0)	
Dyfed *		130	101	121	..)	
Glamorgan West *	157	89	108	94	87	86
Glamorgan South *			(..
Gwent *	80	148	(99	81	105	102
SCOTLAND	1,906	1,744	1,612	1,842	2,238	2,117
Dumfries & Galloway	136					
Strathclyde	609					
Borders	52					
Lothian	126					
Central	105					
Fife	262					
Tayside	224					
Grampian	170					
Highland	183					
Island Areas	39					
South of Scotland		174	159	175	217	200
North East Scotland		147	138	234	293	282
Highlands		161	150	154	185	177
Island Areas		30	28	24	28	27
East Central Scotland		115	104	127	159	154
West Central Scotland		611	563	633	776	720
Tayside and Fife		506	470	495	580	557
GREAT BRITAIN	19,880	19,884	18,162	18,152	20,274	19,341

Note : Regions refer to Government Office Regions

* Includes marine-dredged.

MINING AND QUARRYING

Table 7 : Slate - Production, Deliveries and Stocks

Great Britain Tonnes

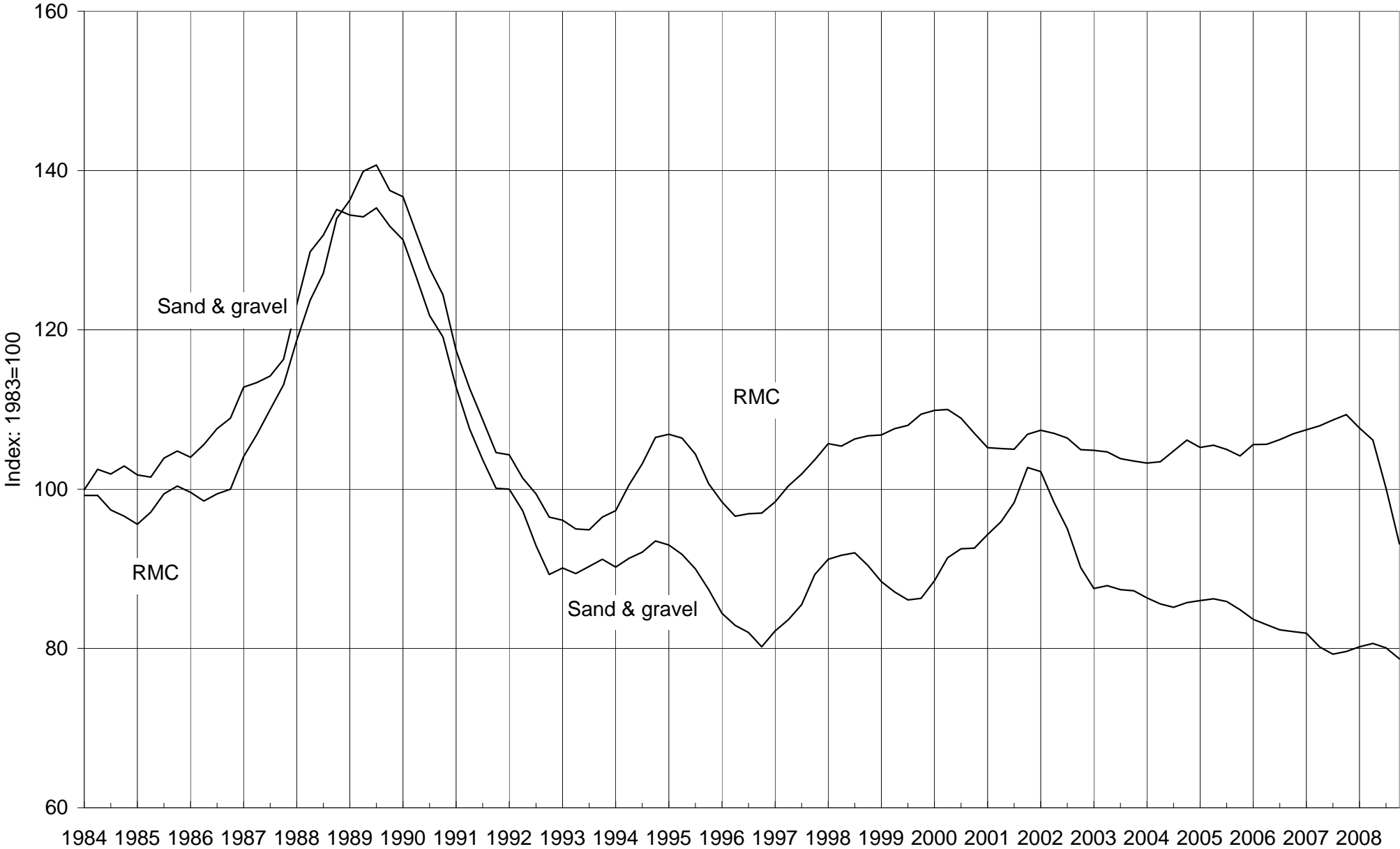
		Production			Deliveries			Stocks (a)		Deliveries	
		Roofing (b)	Other (c)	Powder & Granules	Roofing (b)	Other (c)	Powder & Granules	Roofing (b)	Other (c)	Powder & Fill & Granules	Other Uses
1998		29,140	17,019	58,740	26,069	17,275	59,205	15,423	1,936	3,911	253,707
1999		28,265	18,733	51,872	33,569	13,740	52,648	10,049	6,829	3,135	190,581
2000		28,815	12,399	44,644	33,341	11,670	44,923	5,519	7,356	2,856	328,547
2001		30,770	14,834	47,521	33,052	13,586	47,588	3,159	8,465	2,799	383,353
2002		32,182	18,348	44,424	32,653	19,069	43,947	2,674	7,850	3,275	498,212
2003		34,471	15,623	29,003	34,700	14,576	29,240	2,477	8,849	3,416	669,818
2004	
2005	
2006		..	61,612	22,967	..	64,037	22,719	..	6,454	4,274	860,395
2007		..	65,260	19,141	..	62,646	19,431	2,563	2,521	3,746	..
2008		..	59,644	16,915	..	58,129	18,402	..	2,749	2,253	..
2000	Q4	7,520	2,769	10,882	8,839	2,528	10,311	5,519	7,356	2,856	63,085
2001	Q1	7,348	3,751	10,352	7,289	3,000	11,078	5,537	7,858	2,140	94,404
	Q2	7,195	3,634	11,883	8,114	3,736	11,798	4,618	7,709	1,939	124,026
	Q3	7,605	3,499	13,375	7,887	3,412	13,345	4,313	7,693	2,343	84,366
	Q4	8,622	3,950	11,911	9,762	3,438	11,367	3,159	8,465	2,799	80,557
2002	Q1	8,504	3,554	9,948	8,348	3,756	9,367	3,315	8,281	3,379	94,193
	Q2	7,480	6,687	11,471	7,508	6,869	11,876	3,273	8,182	2,974	148,357
	Q3	7,496	3,767	11,714	7,699	4,141	12,174	3,070	7,813	2,514	122,840
	Q4	8,702	4,340	11,291	9,098	4,303	10,530	2,674	7,850	3,275	132,822
2003	Q1	8,436	3,492	8,077	7,545	3,108	7,887	3,570	8,188	3,417	177,974
	Q2	8,635	4,364	7,335	9,028	4,132	7,230	3,177	8,420	3,523	172,954
	Q3	8,195	4,120	6,685	8,679	4,196	7,333	2,693	8,344	2,875	151,403
	Q4	9,205	3,647	6,906	9,448	3,140	6,790	2,477	8,849	3,416	167,487
2004	Q1	9,397	4,432	7,288	8,379	4,619	7,460	3,469	8,777	3,242	158,552
	Q2	9,031	3,596	8,083	10,135	3,499	7,328	2,365	8,874	3,997	154,407
	Q3	..	8,029	7,544	..	8,578	7,049	3,954	8,225	4,592	158,333
	Q4
2005	Q1
	Q2
	Q3
	Q4	..	13,635	7,448	..	6,194	7,635	2,824	10,281	5,347	124,188
2006	Q1	..	11,594	6,575	..	12,879	6,406	3,170	8,967	5,440	195,762
	Q2	..	14,804	5,051	..	14,983	5,257	3,079	7,424	3,990	223,696
	Q3	..	16,170	5,194	..	16,803	5,094	..	6,792	4,090	251,314
	Q4	..	19,044	6,147	..	19,372	5,962	..	6,454	4,274	189,623
2007	Q1	..	17,787	5,571	..	16,829	5,036	6,984	4,996	4,571	376,876
	Q2	..	16,577	4,315	..	14,765	4,875	3,066	5,850	4,011	346,426
	Q3	..	16,017	4,672	..	15,475	4,929	2,977	6,391	3,754	..
	Q4	..	14,879	4,583	..	15,577	4,591	2,563	2,521	3,746	255,249
2008	Q1	..	18,608	4,282	..	18,071	4,414	..	3,059	3,594	246,495
	Q2	..	15,465	4,738	..	14,457	4,862	..	3,801	3,484	..
	Q3	..	13,811	3,843	..	13,841	5,511	3,851	2,749	1,816	..
	Q4	..	11,760	4,052	..	11,760	3,615	..	2,749	2,253	..

Note : From Q1 1995, the coverage of 'powder & granules' has been extended to include non-quarry manufacture; and 'crude blocks' are included in 'other' manufacture slate.

- (a) Refers to stocks at the end of the period.
- (b) Consists of all slate tiles which could be used as roofing tiles.
- (c) Consists of all slate products for cladding and decorative uses

Deliveries of Sand & Gravel and RMC

4-quarter moving average



The data is taken from Tables 4 & 13

CEMENT

Table 8 : Cement & Clinker - Production, Deliveries and Stocks

Great Britain

Thousand tonnes

	Cement						Clinker		
	Production	Exports	Deliveries	Imports (into GB)		Cementitious Material		Production	
	of which : (from GB)	(from GB)	(into GB from GB production)	by 'Manuf.	by Others**	other	total		
2002	11,089	146	10,762	966	452	2,175	14,355	10,327	
2003	11,215	164	11,072	576	646	2,329	14,623	10,146	
2004	11,405	141	11,074	609	825	2,443	14,951	10,402	
2005	11,216	110	11,004	306	971	2,385	14,666	10,074	
2006	11,469	127	11,221	124	1,089	2,648	15,082	10,069	
2007	11,887	74	11,638	255	1,121	2,769	15,783	10,227	
2002	Q4	2,662	31	2,526	178	126	523	3,353	2,682
2003	Q1	2,632	30	2,661	193	130	529	3,513	2,189
	Q2	2,963	40	2,907	174	173	593	3,847	2,735
	Q3	2,889	53	2,910	128	183	646	3,867	2,537
	Q4	2,731	41	2,594	81	160	560	3,395	2,685
2004	Q1	2,623	31	2,683	138	196	554	3,571	2,153
	Q2	3,023	40	2,875	176	220	625	3,896	2,711
	Q3	2,971	36	2,863	185	219	688	3,955	2,841
	Q4	2,788	34	2,653	110	190	576	3,529	2,697
2005	Q1	2,544	21	2,555	104	225	547	3,431	2,193
	Q2	3,024	30	2,986	70	264	632	3,952	2,669
	Q3	2,940	29	2,923	77	264	666	3,930	2,576
	Q4	2,708	30	2,540	55	218	540	3,353	2,636
2006	Q1	2,647	25	2,737	28	269	601	3,635	2,127
	Q2	2,981	30	2,895	32	268	692	3,887	2,622
	Q3	2,990	37	2,917	40	303	732	3,992	2,654
	Q4	2,851	35	2,672	24	249	623	3,568	2,666
2007	Q1	2,678	27	2,779	43	271	643	3,735	2,021
	Q2	3,188	22	3,061	59	297	701	4,117	2,812
	Q3	3,130	9	3,011	84	294	746	4,135	2,751
	Q4	2,891	16	2,787	69	259	681	3,796	2,643
2008	Q1	2,609	18	2,551	88	265	596	3,500	2,267
	Q2	2,803	18	2,816	94	2,366
	Q3	2,520	13	2,496	72	2,202
2007	Nov	1,054	5	1,046	25	857
	Dec	772	2	625	31	931
2008	Jan	746	6	776	35	752
	Feb	916	6	941	28	636
	Mar	947	6	834	25	879
	Apr	939	10	1,001	25	867
	May	928	2	914	21	791
	Jun	936	6	901	48	708
	Jul	921	5	924	21	794
	Aug	810	4	744	21	805
	Sep	789	4	828	30	603
	Oct	835	4	854	0	735
	Nov	757	4	702	9	642

NB Where the coverage is for Great Britain, the figures for imports & exports are defined accordingly and have been estimated.

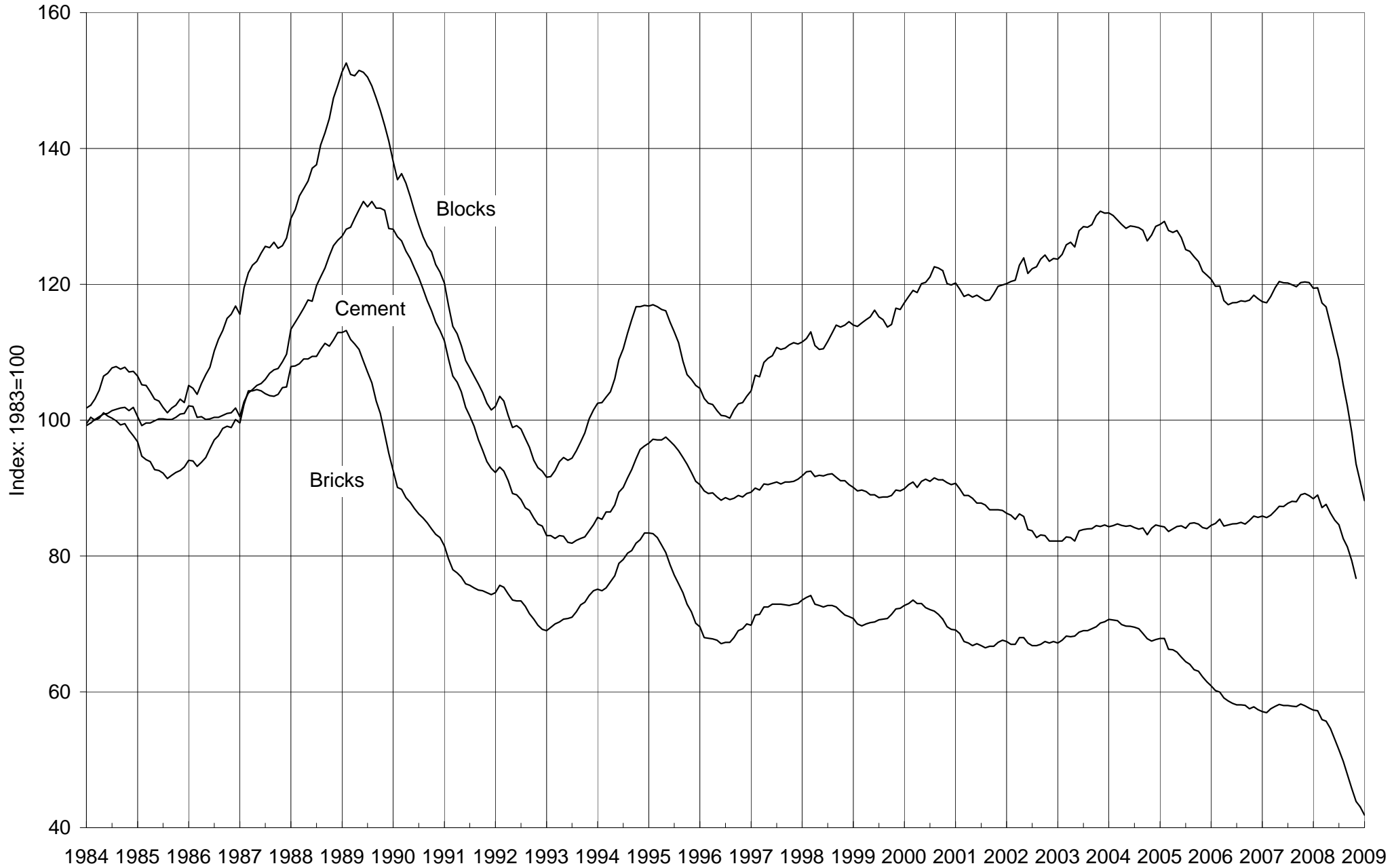
Cementitious material covers cement itself, pulverised fuel ash (pfa) to BS 3892 Part 1 and ground granulated blast-furnace slag (ggbs) to BS 6699

* Refers to stocks at end of period

** Estimated

Deliveries of Bricks, Blocks & Cement

12-month moving totals



The data is taken from tables 8, 9 and 11

BRICKS

Table 9 : Bricks - Production, Deliveries and Stocks

Great Britain

	Production	Deliveries (from)	Stocks*	Production	Deliveries (from)	Stocks*
(a) Brick Type						
	All Types			Commons		
2004	2,868	2,830	617	318	322	105
2005	2,748	2,570	791	319	304	117
2006	2,510	2,399	906	304	284	137
2007	2,471	2,409	965	305	291	150
2008	1,937	1,800	1,109	245	236	157
2007 Q4	584	537	965	77	64	150
2008 Q1	579	500	1,052	75	62	163
Q2	585	539	1,097	69	73	159
Q3	474	423	1,147	59	55	162
Q4	299	337	1,109	41	46	157
2008 January	159	144	981	19	21	148
February	196	171	1,005	19	20	147
March	225	185	1,052	37	21	163
April	198	192	1,058	28	30	160
May	187	173	1,071	18	20	158
June	200	173	1,097	24	23	159
July	167	144	1,120	27	18	167
August	134	133	1,119	16	18	164
September	174	146	1,147	16	19	162
October	136	125	1,158	18	18	162
November	100	109	1,150	14	16	160
December	63	103	1,109	10	13	157
2009 January (P)	76	94	1,092	10	14	156
(b) Material Type						
	All Materials			Clay#		
2004	2,868	2,830	617	2,707	2,668	600
2005	2,748	2,570	791	2,601	2,419	776
2006	2,510	2,399	906	2,359	2,254	887
2007	2,471	2,409	965	2,312	2,249	947
2008	1,937	1,800	1,109	1,822	1,687	1,090
2007 Q4	584	537	965	542	500	947
2008 Q1	579	500	1,052	536	466	1,024
Q2	585	539	1,097	553	504	1,073
Q3	474	423	1,147	446	398	1,122
Q4	299	337	1,109	287	319	1,090
2008 January	159	144	981	150	130	966
February	196	171	1,005	186	160	992
March	225	185	1,052	201	176	1,024
April	198	192	1,058	183	178	1,029
May	187	173	1,071	180	163	1,046
June	200	173	1,097	190	163	1,073
July	167	144	1,120	151	136	1,088
August	134	133	1,119	126	125	1,089
September	174	146	1,147	170	138	1,122
October	136	125	1,158	131	118	1,136
November	100	109	1,150	95	102	1,129
December	63	103	1,109	60	99	1,090
2009 January (P)	76	94	1,092

* Refers to stocks at end of period

#Sand-lime bricks are included with clay bricks

Millions

Production	Deliveries (from)	Stocks*	Production	Deliveries (from)	Stocks*		
						(a) Brick Type	
Facings			Engineerings				
2,327	2,290	492	224	218	19	2004	
2,202	2,056	625	227	210	48	2005	
2,013	1,923	710	193	192	58	2006	
1,950	1,906	753	216	212	62	2007	
1,521	1,396	893	172	168	59	2008	
460	424	753	47	49	62	2007	Q4
454	392	829	50	46	61	2008	Q1
474	418	884	42	49	54		Q2
367	328	924	48	40	61		Q3
226	257	893	32	34	59		Q4
125	111	767	16	13	65	2008	January
159	135	792	17	16	66		February
170	147	829	18	17	61		March
157	147	839	13	15	59		April
156	136	859	12	17	54		May
160	134	884	16	17	54		June
125	112	897	15	14	56		July
105	102	900	13	13	55		August
138	114	924	20	13	61		September
105	96	933	14	11	64		October
75	82	926	10	10	63		November
45	79	893	8	12	59		December
58	75	873	8	5	62	2009	January (P)
						(b) Material Type	
Sand-Lime#			Concrete				
..	161	162	17	2004	
..	147	151	15	2005	
..	150	146	19	2006	
..	159	160	18	2007	
..	115	113	19	2008	
..	43	37	18	2007	Q4
..	43	34	28	2008	Q1
..	32	35	24		Q2
..	28	25	25		Q3
..	12	19	19		Q4
..	9	13	14	2008	January
..	10	11	13		February
..	24	10	28		March
..	15	14	29		April
..	7	10	25		May
..	10	11	24		June
..	16	8	32		July
..	8	8	30		August
..	4	9	25		September
..	5	8	23		October
..	5	6	21		November
..	2	5	19		December
..	2008	January (P)

BRICKS

Table 10 : Brick Production, Deliveries and Stocks by English region, Wales and Scotland

	North East	Yorks & Humber	North West	West Midlands	East Midlands	East of England
(a) Commons				#		#
Production						
2008	3,913	5,794	17,520	14,060	43,964	62,248
2008 Q1	..	1,218	5,153	..	14,763	..
Q2	..	1,812	4,987	..	11,662	..
Q3	..	1,427	4,300	..	10,232	..
Q4	894	1,337	3,080	..	7,307	..
2008 December	..	557	398	310	1,795	..
Deliveries (from)						
2008	4,468	6,355	19,022	12,873	40,273	56,478
2008 Q1	..	1,801	5,607	..	10,899	..
Q2	..	1,779	5,562	..	11,505	..
Q3	..	1,632	4,330	3,533	9,898	..
Q4	901	..	3,523	2,108	7,971	..
2008 December	..	372	766	515	1,697	..
Stocks *						
2008	2,384	4,050	5,020	4,819	13,552	98,723
2008 Q1	3,045	4,028	6,068	..	15,493	..
Q2	2,152	4,061	5,493	..	15,650	..
Q3	2,391	3,856	5,463	..	14,216	..
Q4	2,384	4,050	5,020	..	13,552	..
2008 December	2,384	4,050	5,020	..	13,552	..
(b) Facings						
Production						
2008	104,321	103,013	161,541	392,467	267,655	140,869
2008 Q1	..	28,754	48,075	117,042	84,707	..
Q2	..	30,962	49,716	122,244	81,648	..
Q3	29,042	26,285	36,545	97,920	61,311	..
Q4	11,655	17,012	27,205	55,261	39,989	..
2008 December	7,324	8,701
Deliveries (from)						
2008	86,372	86,808	133,166	360,370	236,860	152,713
2008 Q1	..	22,152	37,201	102,638	70,958	..
Q2	..	25,703	40,122	106,264	72,338	..
Q3	..	22,357	31,029	84,805	51,117	..
Q4	14,617	16,596	24,814	66,663	42,447	..
2008 December	..	4,737	6,526	21,444	14,833	..
Stocks *						
2008	66,950	69,979	97,314	190,618	178,754	119,057
2008 Q1	..	60,376	79,813	172,925	161,708	..
Q2	..	65,635	89,407	188,905	171,018	..
Q3	..	69,563	94,923	202,020	181,212	..
Q4	..	69,979	97,314	190,618
2008 December	..	69,979	97,314	190,618
(c) Engineering #						
Production						
2008	9,823	33,554	30,377	82,873	3,829	..
2008 Q1	22,883	136	..
Q2	20,114	919	..
Q3	22,935
Q4	1,842	..	1,800	16,941
2008 December	0	..	0	3,994	0	0
Deliveries (from)						
2008	8,914	31,285	36,214	77,824	576	..
2008 Q1	20,569
Q2	20,303
Q3	19,352
Q4	17,600	..	0
2008 December	6,394	..	0
Stocks *						
2008	1,458	25,109	7,483	12,846	11,924	..
2008 Q1	10,111
Q2	9,922
Q3	13,505
Q4	12,846
2008 December	12,846	..	0

Note : Regions now use Government Office boundaries

* Refers to stocks at end of period.

BRICKS

Thousands

South East	South West	England	Wales	Scotland	Great Britain	
#	#					
9,020	10,751	167,270	55,019	22,524	244,813	(a) Commons
..	2,745	..	23,747	3,760	74,882	Production
..	69,178	2008
..	59,331	2008 Q1
..	1,811	4,592	41,422	2008 Q2
..	9,566	2008 Q3
..	2008 Q4
..	2008 December
8,826	11,503	159,798	52,895	23,172	235,865	Deliveries (from)
..	2,739	62,212	2008
2,572	6,620	72,673	2008 Q1
2,191	2,984	54,798	2008 Q2
..	2,864	46,182	2008 Q3
313	639	1,082	12,518	2008 Q4
..	2008 December
5,203	2,303	136,054	13,151	7,877	157,082	Stocks *
4,385	3,061	7,097	162,563	2008
..	3,471	8,077	159,068	2008 Q1
..	3,356	161,842	2008 Q2
5,203	2,303	157,082	2008 Q3
5,203	2,303	157,082	2008 Q4
..	2008 December
254,132	58,556	1,482,554	16,406	21,620	1,520,580	(b) Facings
75,072	19,051	..	6,726	..	454,080	Production
81,427	20,835	..	5,293	..	473,553	2008
62,377	367,281	2008 Q1
35,256	225,666	2008 Q2
6,235	45,279	2008 Q3
..	2008 Q4
..	2008 December
226,025	63,894	1,346,208	23,479	26,015	1,395,702	Deliveries (from)
62,591	18,914	..	6,689	..	392,440	2008
65,136	19,681	..	7,402	..	417,783	2008 Q1
55,894	14,467	..	4,916	..	328,197	2008 Q2
42,404	10,832	..	4,472	..	257,282	2008 Q3
11,415	3,126	..	1,191	..	78,965	2008 Q4
..	2008 December
115,702	29,180	867,554	18,140	6,907	892,601	Stocks *
100,076	33,820	828,561	2008
116,367	34,974	884,331	2008 Q1
122,850	33,639	924,217	2008 Q2
115,702	29,180	6,907	892,601	2008 Q3
115,702	29,180	6,907	892,601	2008 Q4
..	2008 December
7,595	..	168,051	799	3,052	171,902	(c) Engineering #
..	50,357	Production
..	42,088	2008
..	47,719	2008 Q1
..	39	0	31,738	2008 Q2
..	0	7,829	2008 Q3
..	2008 Q4
..	2008 December
8,178	..	162,991	810	4,686	168,487	Deliveries (from)
..	45,523	2008
..	48,840	2008 Q1
..	40,424	2008 Q2
..	33,700	2008 Q3
..	11,859	2008 Q4
..	2008 December
307	..	59,127	35	21	59,183	Stocks *
..	60,687	2008
..	53,935	2008 Q1
..	61,145	2008 Q2
..	59,183	2008 Q3
..	59,183	2008 Q4
..	59,183	2008 December

Engineering bricks : South West are included with West Midlands and East of England are included with South East.

BRICKS

Table 10 (cont'd) : Brick Production, Deliveries and Stocks by English region, Wales and Scotland

	North East	Yorks & Humber	North West	West Midlands	East Midlands	East of England
(d) All Bricks						
Production						
2007	132,326	157,629	265,283	592,134	431,332	281,548
2008	118,057	142,361	209,438	488,867	315,448	203,206
2007 Q4	32,844	34,859	61,685	141,315	100,251	66,673
2008 Q1
Q2
Q3
Q4	32,085	..	48,125	..
2007 December	8,585	9,574	15,321	40,127	32,506	21,570
2008 January
February	34,990	..
March	38,887	..
April	49,131
May	48,747	31,298	..
June	28,294	..
July
August	33,805
September	46,521
October	21,991	..
November	24,725
December	7,722	13,005
Deliveries (from)						
2007	119,420	145,025	269,481	588,736	414,683	255,603
2008	99,754	124,448	188,402	450,458	277,709	210,146
2007 Q4	28,459	31,121	59,852	131,537	92,273	53,169
2008 Q1
Q2	130,816
Q3	107,650
Q4	86,330
2007 December	6,624	8,177	13,995	33,974	25,596	14,171
2008 January
February
March
April
May	47,067
June	40,594
July	35,661
August	36,501
September	35,488
October
November
December	28,347
Stocks *						
2007	52,489	81,225	88,781	162,291	168,259	223,854
2008	70,792	99,138	109,817	208,283	204,230	217,780
2007 Q4	52,489	81,225	88,781	162,291	168,259	223,854
2008 Q1
Q2
Q3
Q4
2007 December	52,489	81,225	88,781	162,291	168,259	223,854
2008 January
February
March
April
May
June
July	212,088
August	209,392
September	220,425
October
November
December

Note : Regions now use Government Office boundaries

* Refers to stocks at end of period.

BRICKS

Thousands

South East	South West	England	Wales	Scotland	Great Britain		
						(d) All Bricks	
						Production	
322,706	98,382	2,281,340	106,045	83,762	2,471,147	2007	
270,658	69,840	1,817,875	72,224	47,196	1,937,295	2008	
77,684	20,431	535,742	29,385	19,183	584,310	2007	Q4
..	579,319	2008	Q1
..	584,819		Q2
..	474,331		Q3
..	298,826		Q4
20,246	3,481	151,410	5,176	5,877	162,463	2007	December
..	159,166	2008	January
..	195,521		February
..	224,632		March
..	198,334		April
..	186,689		May
..	199,796		June
..	166,857		July
..	133,696		August
..	173,778		September
..	136,292		October
..	99,860		November
..	62,674		December
						Deliveries (from)	
319,493	110,843	2,223,284	99,512	85,800	2,408,596	2007	
242,074	76,006	1,668,997	77,184	53,873	1,800,054	2008	
71,398	25,123	492,932	23,622	20,039	536,593	2007	Q4
..	500,175	2008	Q1
..	539,296		Q2
..	423,419		Q3
..	337,164		Q4
17,890	5,812	126,239	6,570	4,762	137,571	2007	December
..	143,695	2008	January
..	171,278		February
..	185,202		March
..	192,427		April
..	173,371		May
..	173,498		June
..	143,972		July
..	5,439	133,002		August
20,174	5,828	146,445		September
..	125,207		October
..	108,615		November
..	103,342		December
						Stocks *	
93,664	36,738	907,301	36,395	21,482	965,178	2007	
121,212	31,483	1,062,735	31,326	14,805	1,108,866	2008	
93,664	36,738	907,301	36,395	21,482	965,178	2007	Q4
..	36,881	1,051,811	2008	Q1
..	1,097,334		Q2
..	1,147,204		Q3
..	1,108,868		Q4
93,664	36,738	907,301	36,395	21,482	965,178	2007	December
..	36,780	980,649	2008	January
..	36,825	1,004,892		February
..	36,881	1,051,811		March
..	1,057,718		April
..	1,071,036		May
..	38,533	1,097,334		June
..	38,961	1,120,219		July
..	38,260	1,119,036		August
..	37,050	1,147,204		September
..	37,168	1,158,289		October
..	1,149,534		November
..	1,108,866		December

Engineering bricks : South West are included with West Midlands and East of England are included with South East.

CONCRETE PRODUCTS

Table 11 : Concrete Blocks - Production, Deliveries and Stocks

Great Britain

	All Types			Dense		
	Production	Deliveries (from)	Stocks*	Production	Deliveries (from)	Stocks*
1998	84,662	84,486	8,865	39,439	39,024	4,568
1999	87,767	85,851	9,109	38,439	38,255	4,431
2000	90,219	88,529	9,594	37,629	37,013	4,368
2001	87,922	88,509	8,842	36,598	36,518	4,258
2002	91,474	91,342	9,014	35,744	36,019	3,963
2003	23,178	21,311	8,513	8,896	8,392	3,684
2004	96,256	95,371	10,088	37,677	37,444	3,690
2005	89,997	89,551	9,680	36,188	36,473	3,465
2006	87,510	87,015	..	34,956	34,741	..
2007	89,951	88,746	..	36,686	35,396	..
2008	67,743	67,136	8,920	29,675	29,889	3,498
2003 Q4	23,178	21,311	8,513	8,896	8,392	3,684
2004 Q1	24,272	22,430	10,306	8,797	8,554	3,884
Q2	24,715	25,175	9,923	9,397	9,813	3,251
Q3	24,537	26,045	9,180	10,183	10,297	3,174
Q4	22,731	21,721	10,088	9,300	8,781	3,690
2005 Q1	23,135	21,992	11,297	9,336	8,979	4,116
Q2	23,828	24,386	9,817	9,635	9,960	3,707
Q3	22,847	23,454	9,123	9,231	9,526	3,463
Q4	20,186	19,720	9,680	7,985	8,008	3,465
2006 Q1	21,155	20,820	..	8,536	8,160	..
Q2	22,435	22,560	..	8,903	8,903	..
Q3	22,615	23,611	..	9,384	9,599	..
Q4	21,305	20,023	..	8,133	8,079	..
2007 Q1	22,014	21,057	..	8,714	8,141	..
Q2	22,532	24,033	..	9,268	9,531	..
Q3	23,248	23,184	..	9,727	9,283	..
Q4	22,157	20,472	..	8,978	8,442	..
2008 Q1	21,131	18,855	11,749	8,564	7,853	5,075
Q2	20,231	19,714	11,977	8,767	8,677	5,107
Q3	14,894	16,309	10,224	7,131	7,576	4,479
Q4	11,487	12,259	8,920	5,214	5,783	3,498
2007 January	6,902	6,191	..	3,011	2,472	..
February	6,987	6,613	..	2,578	2,509	..
March	8,125	8,253	..	3,125	3,160	..
April	6,645	7,427	..	2,669	2,931	..
May	7,759	8,299	..	3,244	3,300	..
June	8,129	8,307	..	3,355	3,300	..
July	8,099	7,882	..	3,317	3,128	..
August	7,021	7,739	..	3,097	3,152	..
September	8,128	7,564	..	3,313	3,003	..
October	8,202	8,013	..	3,356	3,317	..
November	8,287	7,531	..	3,383	3,135	..
December	5,668	4,928	..	2,239	1,990	..
2008 January	7,212	5,593	..	2,992	2,340	..
February	6,955	6,665	..	2,863	2,804	..
March	6,965	6,597	11,749	2,709	2,710	5,075
April	7,213	7,000	..	3,087	2,932	..
May	6,385	6,396	..	2,789	2,753	..
June	6,633	6,318	11,977	2,891	2,992	5,107
July	5,687	6,016	..	2,610	2,808	..
August	4,410	5,014	..	2,311	2,397	..
September	4,796	5,279	10,224	2,210	2,370	4,479
October	4,616	5,178	..	2,142	2,453	..
November	4,035	4,057	..	1,841	1,922	..
December	2,836	3,024	8,920	1,231	1,408	3,498
2009 January (P)	3,813	3,503	..	1,821	1,588	..

* Refers to stocks at end of period

CONCRETE PRODUCTS

Thousand square metres

Lightweight			Aerated				
Production	Deliveries (from)	Stocks*	Production	Deliveries (from)	Stocks*		
19,110	18,847	2,191	26,113	26,615	2,106	1998	
20,830	20,828	1,858	28,497	26,768	2,820	1999	
22,991	22,638	2,169	29,599	28,878	3,058	2000	
22,684	22,670	2,207	28,639	29,320	2,377	2001	
23,478	23,537	2,188	32,252	31,786	2,863	2002	
5,980	5,687	2,107	8,302	7,232	2,721	2003	
25,462	25,736	2,271	33,117	31,674	4,127	2004	
25,561	25,673	2,173	28,248	27,405	4,042	2005	
25,345	25,222	2,303	27,209	27,051	3,622	2006	
25,965	25,667	2,434	27,300	27,682	2,906	2007	
18,168	18,363	2,149	19,900	18,884	3,273	2008	
5,980	5,687	2,107	8,302	7,232	2,721	2003	Q4
6,147	6,005	2,249	9,328	7,872	4,173	2004	Q1
6,237	6,707	2,077	9,082	8,655	4,596		Q2
6,562	6,802	1,977	7,792	8,429	4,028		Q3
6,516	6,222	2,271	6,916	6,718	4,127		Q4
6,389	6,315	2,365	7,410	6,699	4,816	2005	Q1
6,690	6,935	2,109	7,503	7,491	4,001		Q2
6,623	6,730	2,005	6,993	7,197	3,655		Q3
5,859	5,693	2,173	6,342	6,019	4,042		Q4
6,262	6,179	2,251	6,357	6,481	3,778	2006	Q1
6,125	6,342	2,035	7,406	7,315	3,796		Q2
6,699	6,781	1,967	6,532	7,231	2,907		Q3
6,258	5,920	2,303	6,914	6,024	3,622		Q4
6,418	6,437	2,270	6,883	6,479	3,937	2007	Q1
6,572	6,867	1,946	6,692	7,636	3,056		Q2
6,757	6,616	1,970	6,764	7,286	2,397		Q3
6,217	5,748	2,434	6,962	6,282	2,906		Q4
5,580	5,389	2,633	6,988	5,612	4,041	2008	Q1
5,421	5,405	2,549	6,043	5,632	4,321		Q2
4,110	4,309	2,338	3,653	4,424	3,406		Q3
3,057	3,260	2,149	3,216	3,216	3,273		Q4
1,992	1,892	..	1,899	1,827	..	2007	January
2,082	2,038	..	2,327	2,067	..		February
2,343	2,507	..	2,657	2,586	3,937		March
2,011	2,184	..	1,966	2,313	..		April
2,161	2,405	..	2,353	2,594	..		May
2,401	2,278	..	2,373	2,729	3,056		June
2,304	2,243	..	2,478	2,511	..		July
2,221	2,257	..	1,703	2,330	..		August
2,232	2,116	..	2,583	2,445	2,397		September
2,389	2,279	..	2,457	2,417	..		October
2,310	2,153	..	2,594	2,243	..		November
1,518	1,316	..	1,911	1,622	2,906		December
1,919	1,617	..	2,301	1,636	..	2008	January
1,771	1,848	..	2,320	2,013	..		February
1,889	1,924	2,633	2,367	1,963	4,041		March
2,041	1,970	..	2,086	2,098	..		April
1,700	1,868	..	1,896	1,775	..		May
1,681	1,567	2,549	2,061	1,759	4,321		June
1,543	1,580	..	1,535	1,627	..		July
1,308	1,320	..	791	1,297	..		August
1,259	1,409	2,338	1,328	1,500	3,406		September
1,275	1,437	..	1,199	1,288	..		October
1,023	1,087	..	1,172	1,048	..		November
760	736	2,149	846	880	3,273		December
967	988	..	1,025	927	..	2009	January (P)

CONCRETE PRODUCTS

Table 12 : Concrete Blocks : Production, Deliveries and Stocks by English Region, Wales and Scotland

		North East	Yorks & Humber	North West	West Midlands	East Midlands	East of England
(a) Dense aggregate							
Production							
2008		478	2,818	3,866	1,357	2,996	2,075
2007	Q4	171	797	1,223	531	890	573
2008	Q1	124	769	1,164	478	915	552
	Q2	..	785	1,142	..	790	612
	Q3	119	661	900	..	671	..
	Q4	93	603	660	..	620	..
Deliveries (from)							
2008		497	2,847	3,949	1,375	3,125	2,072
2007	Q4	145	758	1,150	511	800	591
2008	Q1	..	725	1,020	..	790	577
	Q2	144	786	1,174	419	830	599
	Q3	..	745	995	..	855	549
	Q4	..	591	760	..	650	347
Stocks *							
2008		..	349	512	..	392	235
2007	Q4	..	470	595	119	522	..
2008	Q1	..	515	738	121	648	..
	Q2	..	463	706	..	608	277
	Q3	..	378	611	..	423	265
	Q4	65	349	512	..	392	..
(b) Other (1)							
Production							
2008		1,390	8,552	2,161	3,501	4,773	6,244
2007	Q4	468	3,184	790	1,225	1,404	2,289
2008	Q1	..	2,991	622	..	1,444	2,246
	Q2	..	2,663	643	..	1,321	1,926
	Q3	271	1,599	547	..	1,121	..
	Q4	248	1,299	349	..	887	..
Deliveries (from)							
2008		1,395	8,553	2,124	2,901	4,809	6,645
2007	Q4	443	2,854	709	1,169	1,343	1,993
2008	Q1	..	2,650	619	..	1,247	2,046
	Q2	..	2,676	610	..	1,282	2,036
	Q3	..	1,912	521	..	1,222	1,537
	Q4	..	1,315	374	..	1,058	1,026
Stocks *							
2008		129	1,477	352	702	446	750
2007	Q4	134	1,580	320	366	528	924
2008	Q1	196	1,919	324	667	723	1,129
	Q2	203	1,818	356	823	763	1,123
	Q3	..	1,493	377	..	662	852
	Q4	129	1,477	352	..	446	..
(c) Total							
Production							
2008		1,868	11,370	6,027	4,858	7,769	8,319
2007	Q4	639	3,981	2,013	1,756	2,294	2,862
2008	Q1	565	3,760	1,786	1,747	2,359	2,798
	Q2	572	3,448	1,785	1,543	2,111	2,538
	Q3	390	2,260	1,447	881	1,792	1,776
	Q4	341	1,902	1,009	687	1,507	1,207
Deliveries (from)							
2008		1,892	11,400	6,073	4,276	7,934	8,717
2007	Q4	588	3,612	1,859	1,680	2,143	2,584
2008	Q1	507	3,375	1,639	1,342	2,037	2,623
	Q2	566	3,462	1,784	1,286	2,112	2,635
	Q3	451	2,657	1,516	1,000	2,077	2,086
	Q4	368	1,906	1,134	648	1,708	1,373
Stocks *							
2008		194	1,826	864	789	838	985
2007	Q4	216	..	915	485	1,050	..
2008	Q1	275	2,434	1,062	788	1,371	1,393
	Q2	281	2,281	1,062	942	1,371	1,400
	Q3	221	1,871	988	781	1,085	1,117
	Q4	194	1,826	864	789	838	985

Note : Regions refer to Government Office Regions

* Refers to stocks at end of period.

CONCRETE PRODUCTS

Thousand square metres

South East	South West	England	Wales	Scotland	Great Britain			
						(a) Dense aggregate		
						Production		
2,951	6,537	23,078	3,623	2,975	29,676	2008		
843	2,086	7,114	944	920	8,978	2007	Q4	
850	1,946	6,798	975	791	8,564	2008	Q1	
930	1,953	6,771	1,032	964	8,767		Q2	
714	1,547	5,469	890	772	7,131		Q3	
..	1,091	4,040	726	448	5,214		Q4	
						Deliveries (from)		
2,984	6,433	23,282	3,601	3,006	29,889	2008		
802	1,837	6,594	976	872	8,442	2007	Q4	
808	1,626	6,136	906	811	7,853	2008	Q1	
864	1,900	6,716	1,061	900	8,677		Q2	
727	1,630	5,914	903	759	7,576		Q3	
..	1,277	4,516	731	536	5,783		Q4	
						Stocks *		
279	674	2,441	509	396	3,498	2008		
313	1,025	3,420	479	483	4,382	2007	Q4	
355	1,344	4,064	548	463	5,075	2008	Q1	
421	1,400	4,072	520	515	5,107		Q2	
408	1,298	3,549	514	416	4,479		Q3	
279	674	2,593	509	396	3,498		Q4	
						(b) Other (1)		
						Production		
8,309	2,029	36,959	442	666	38,067	2008		
2,563	909	12,832	123	224	13,179	2007	Q4	
2,465	815	12,293	109	165	12,567	2008	Q1	
2,359	663	11,131	117	216	11,464		Q2	
1,736	399	7,473	104	186	7,763		Q3	
..	152	6,062	112	99	6,273		Q4	
						Deliveries (from)		
7,493	2,257	36,177	421	650	37,248	2008		
2,391	817	11,719	106	205	12,030	2007	Q4	
2,125	775	10,721	116	165	11,002	2008	Q1	
2,203	628	9,435	103	210	9,748		Q2	
1,693	528	8,449	113	169	8,731		Q3	
..	326	6,281	89	106	6,476		Q4	
						Stocks *		
1,157	229	5,242	84	96	5,422	2008		
895	456	5,203	61	75	5,339	2007	Q4	
1,089	497	6,544	54	76	6,674	2008	Q1	
1,115	519	6,720	69	81	6,870		Q2	
973	388	5,581	61	103	5,745		Q3	
1,157	229	5,242	84	96	5,422		Q4	
						(c) Total		
						Production		
11,260	8,566	60,037	4,065	3,641	67,743	2008		
3,406	2,995	19,946	1,067	1,144	22,157	2007	Q4	
3,315	2,761	19,091	1,084	956	21,131	2008	Q1	
3,289	2,616	17,902	1,149	1,180	20,231		Q2	
2,450	1,946	12,942	994	958	14,894		Q3	
2,206	1,243	10,102	838	547	11,487		Q4	
						Deliveries (from)		
10,477	8,690	59,459	4,022	3,656	67,137	2008		
3,193	2,654	18,313	1,082	1,077	20,472	2007	Q4	
2,933	2,401	16,857	1,022	976	18,855	2008	Q1	
3,067	2,528	17,440	1,164	1,110	19,714		Q2	
2,420	2,158	14,365	1,016	928	16,309		Q3	
2,057	1,603	10,797	820	642	12,259		Q4	
						Stocks *		
1,436	903	7,835	593	492	8,920	2008		
1,208	1,481	8,623	540	558	9,721	2007	Q4	
1,444	1,841	10,608	602	539	11,749	2008	Q1	
1,536	1,919	10,792	589	596	11,977		Q2	
1,381	1,686	9,130	575	519	10,224		Q3	
1,436	903	7,835	593	492	8,920		Q4	

(1) Lightweight aggregate including aerated concrete blocks where appropriate

OTHER BUILDING MATERIALS

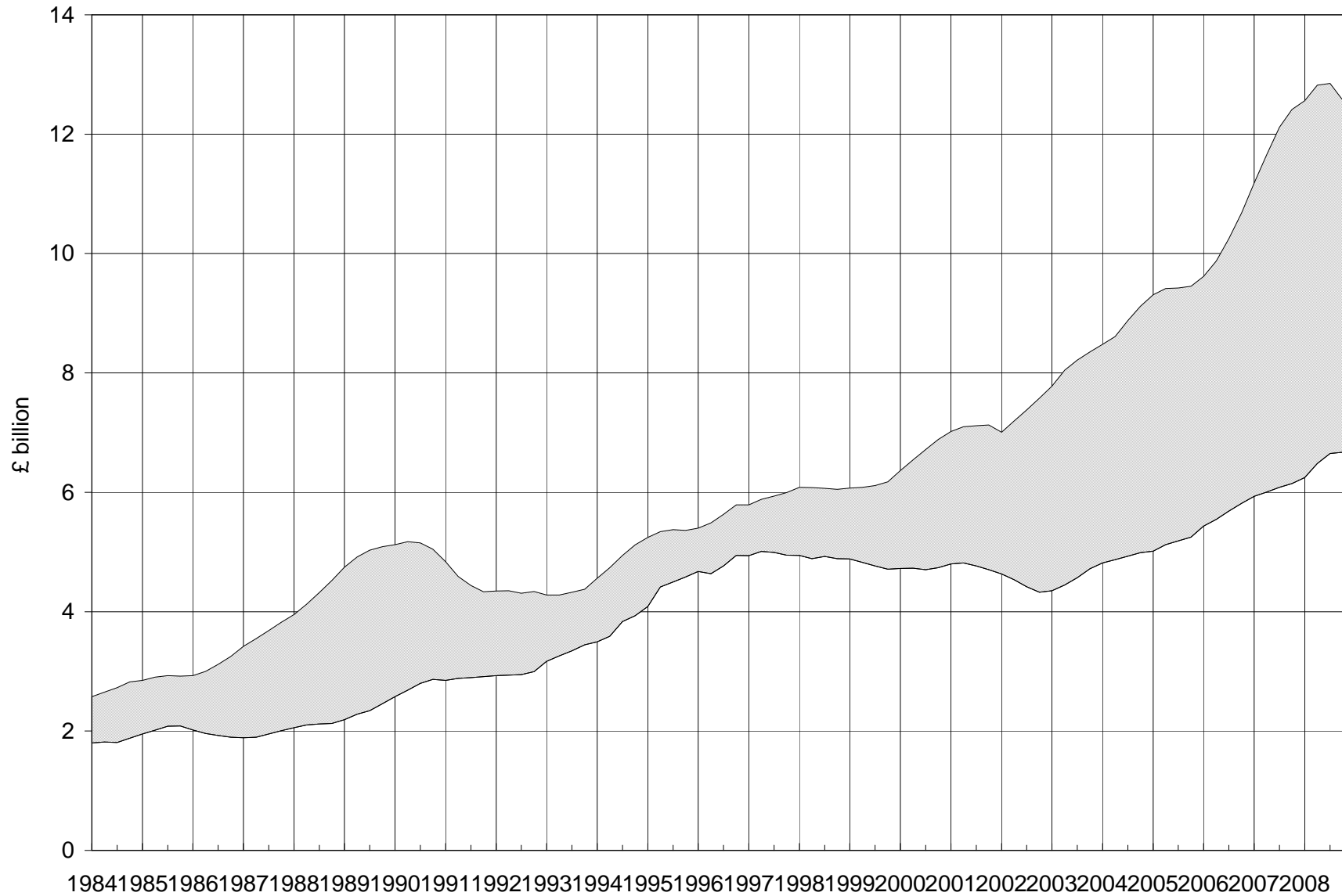
Table 13 : Other Building Materials

		Great Britain			United Kingdom
		Concrete Roofing Tiles (Th.sq.m. of roof area covered)			Ready-Mixed Concrete (Th.cu.m.)
		Production	Deliveries	Stocks *	Deliveries
1998		24,981	25,587	3,442	22,983
1999		25,972	25,365	3,543	23,550
2000		26,765	25,047	4,552	23,043
2001		24,825	24,430	4,947	23,008
2002		25,023	24,390	4,586	22,597
2003		21,437	21,401	2,982	22,289
2004		20,739	19,403	2,850	22,856
2005		25,719	24,489	4,902	22,432
2006		23,730	24,118	4,426	23,029
2007		23,551	23,812	3,646	23,548
2008		20,084	19,926	3,899	20,051
1999	Q4	6,801	6,580	3,543	5,643
2000	Q1	7,562	6,330	4,679	5,685
	Q2	6,818	6,137	5,209	6,048
	Q3	6,406	6,677	4,911	6,062
	Q4	5,979	5,903	4,552	5,248
2001	Q1	6,618	5,762	5,407	5,293
	Q2	6,435	5,957	5,885	6,018
	Q3	6,047	6,907	5,025	6,050
	Q4	5,725	5,803	4,947	5,647
2002	Q1	6,757	5,801	5,332	5,404
	Q2	6,097	6,474	4,954	5,934
	Q3	5,918	6,848	3,654	5,929
	Q4	6,251	5,267	4,586	5,330
2003	Q1	5,821	5,798	4,484	5,388
	Q2	6,280	6,364	4,480	5,892
	Q3	3,917	4,455	2,362	5,750
	Q4	5,418	4,785	2,982	5,259
2004	Q1	5,498	4,294	3,787	5,334
	Q2	5,266	4,800	3,728	5,931
	Q3	4,920	5,134	3,048	6,038
	Q4	5,055	5,175	2,850	5,553
2005	Q1	5,787	4,779	3,732	5,137
	Q2	7,502	6,406	5,818	5,994
	Q3	6,135	7,103	4,850	5,920
	Q4	6,295	6,200	4,902	5,381
2006	Q1	6,792	6,252	5,418	5,445
	Q2	6,002	5,709	5,708	5,995
	Q3	5,448	6,371	4,688	6,047
	Q4	5,489	5,787	4,426	5,542
2007	Q1	6,618	5,629	5,368	5,554
	Q2	5,775	5,728	5,360	6,103
	Q3	5,129	6,541	3,929	6,205
	Q4	6,028	5,914	3,646	5,686
2008	Q1	5,708	5,421	3,922	5,193
	Q2	5,815	5,679	4,488	5,773
	Q3	4,657	4,977	3,840	4,902
	Q4	3,903	3,849	3,899	4,183

* Refers to stocks at the end of the period.

Comparison of Imports & Exports

4-quarter moving totals



The data is taken from Table 14

EXTERNAL TRADE

Table 14 : Value of Overseas Trade in Selected Materials and Components for Constructional Use : Imports (cif) & Exports (fob)

United Kingdom		Current Prices (£'000)					
		2003	2004	2005	2006	2007	2008
All Building Materials & Components	Imports	8,353,619	9,118,176	9,453,468	10,680,840	12,415,881	12,575,318
	Exports	4,717,767	4,987,277	5,246,751	5,813,304	6,147,720	6,669,850
	Balance	(3,635,852)	(4,130,899)	(4,206,717)	(4,867,536)	(6,268,161)	(5,905,468)
All Raw Materials	Imports	114,586	123,992	149,137	180,137	213,589	227,331
	Exports	63,367	79,654	91,180	98,058	124,957	108,274
	Balance	(51,219)	(44,338)	(57,957)	(82,079)	(88,632)	(119,057)
Sand for construction	Imports	2,421	3,756	4,363	5,075	6,454	6,369
	Exports	3,443	4,566	5,499	5,770	7,770	9,354
Crushed Rock : uncoated	Imports	18,724	21,830	28,580	39,307	38,882	42,944
	Exports	46,046	53,914	60,850	65,986	71,989	69,300
Crushed Rock : coated	Imports	6	3	1,172	2,246	2,927	3,206
	Exports	2,891	1,978	4,787	2,622	3,937	3,862
Building Stone : unprocessed	Imports	58,201	74,956	92,059	95,903	115,063	124,269
	Exports	1,831	1,769	1,597	1,777	3,209	2,159
Slate : unprocessed	Imports	7,082	7,431	7,428	10,894	11,590	9,272
	Exports	686	587	703	309	1,579	813
Gypsum & Anhydrite	Imports	8,596	8,040	9,509	8,649	8,626	8,301
	Exports	428	510	547	512	493	892
Bituminous Shale	Imports	19,556	7,975	6,027	18,063	30,045	32,971
	Exports	8,042	16,329	17,196	21,084	35,980	21,894
All Semi-Manufactures	Imports	1,572,077	1,631,987	1,619,893	1,756,079	2,196,076	1,966,979
	Exports	466,234	517,347	575,828	618,574	644,416	651,004
	Balance	(1,105,843)	(1,114,640)	(1,044,065)	(1,137,505)	(1,551,660)	(1,315,975)
Clinker	Imports	20,840	21,684	26,338	40,922	60,554	35,970
	Exports	2,027	1,325	1,801	2,644	1,900	1,272
Sawn Wood > 6mm thick	Imports	744,256	712,779	691,359	727,916	915,899	606,535
	Exports	26,426	26,178	30,939	38,370	32,010	20,770
Densified Wood	Imports	2,247	2,199	2,604	2,782	2,332	1,798
	Exports	405	473	474	422	319	268
Particle Board	Imports	48,410	54,772	58,318	56,174	55,934	45,426
	Exports	12,305	12,320	11,058	16,357	9,377	8,871
Laminated Wood	Imports	190,846	237,481	232,912	250,616	282,912	296,013
	Exports	13,958	18,564	22,720	24,435	23,172	21,940
Fibreboard	Imports	63,182	64,665	58,050	61,430	72,498	60,798
	Exports	19,960	16,456	10,397	12,533	10,574	8,884
Steel for Fabrication	Imports	229,234	273,422	248,987	278,233	463,477	531,839
	Exports	218,993	251,209	270,580	236,427	257,126	301,582
Aluminium for Fabrication	Imports	203,976	189,245	211,703	272,982	277,251	314,090
	Exports	109,558	122,579	152,508	220,652	234,348	216,645
Profiles of Vinyl Chloride	Imports	52,186	47,944	48,667	48,748	41,560	43,936
	Exports	23,149	24,625	24,011	27,350	33,766	28,781
Slag for Construction	Imports	1,963	2,352	4,790	4,625	8,607	11,579
	Exports	834	1,913	2,788	1,747	1,231	1,017
Tar & Bituminous Mixtures	Imports	12,807	21,277	34,133	9,262	12,284	17,416
	Exports	26,423	30,727	37,636	26,008	27,896	26,916
Lime	Imports	2,130	4,167	2,031	2,390	2,767	1,579
	Exports	12,196	10,977	10,915	11,629	12,698	14,059

EXTERNAL TRADE

Current Prices (£'000)

2007 Q4	2008 Q1	Q2	Q3	Q4		
3,084,306	3,118,895	3,420,795	3,224,511	2,811,117	Imports	All Building Materials & Components
1,539,081	1,607,957	1,792,041	1,711,179	1,558,673	Exports	
(1,545,225)	(1,510,938)	(1,628,754)	(1,513,332)	(1,252,444)	Balance	
59,415	59,084	68,739	56,795	42,713	Imports	All Raw Materials
32,231	21,307	31,713	33,301	21,953	Exports	
(27,184)	(37,777)	(37,026)	(23,494)	(20,760)	Balance	
1,738	1,543	1,731	1,934	1,161	Imports	Sand for construction
1,795	2,172	2,599	2,141	2,442	Exports	
9,572	10,884	11,298	12,108	8,654	Imports	Crushed Rock : uncoated
17,340	15,258	21,253	20,061	12,728	Exports	
785	803	866	852	685	Imports	Crushed Rock : coated
1,353	478	1,396	702	1,286	Exports	
30,947	30,010	39,215	32,576	22,468	Imports	Building Stone : unprocessed
802	365	657	663	474	Exports	
3,167	2,709	2,192	2,320	2,051	Imports	Slate : unprocessed
174	94	463	136	120	Exports	
1,938	1,880	2,273	2,558	1,590	Imports	Gypsum & Anhydrite
131	165	182	334	211	Exports	
11,266	11,255	11,165	4,445	6,106	Imports	Bituminous Shale
10,636	2,776	5,162	9,264	4,692	Exports	
523,788	514,786	542,585	499,899	409,709	Imports	All Semi-Manufactures
151,291	162,204	190,868	162,880	135,052	Exports	
(372,497)	(352,582)	(351,717)	(337,019)	(274,657)	Balance	
15,167	13,088	11,312	7,164	4,406	Imports	Clinker
482	471	388	276	137	Exports	
190,417	177,095	185,897	147,021	96,522	Imports	Sawn Wood > 6mm thick
5,963	5,806	6,549	4,865	3,550	Exports	
495	343	756	420	279	Imports	Densified Wood
68	42	95	90	41	Exports	
13,352	13,762	13,361	10,459	7,844	Imports	Particle Board
2,146	2,026	2,692	2,271	1,882	Exports	
71,211	74,278	70,561	78,565	72,609	Imports	Laminated Wood
5,148	6,466	6,212	4,540	4,722	Exports	
17,685	16,634	17,173	15,284	11,707	Imports	Fibreboard
2,392	2,357	2,374	2,128	2,025	Exports	
129,319	126,940	137,654	134,254	132,991	Imports	Steel for Fabrication
66,457	77,078	91,576	73,635	59,293	Exports	
67,957	73,480	83,672	86,349	70,589	Imports	Aluminium for Fabrication
51,253	52,353	62,431	56,618	45,243	Exports	
9,325	11,976	12,361	11,579	8,020	Imports	Profiles of Vinyl Chloride
7,654	7,511	8,031	7,242	5,997	Exports	
2,609	2,312	3,031	4,328	1,908	Imports	Slag for Construction
172	411	405	109	92	Exports	
5,597	4,459	6,372	4,114	2,471	Imports	Tar & Bituminous Mixtures
6,335	4,587	5,792	7,800	8,737	Exports	
654	418	435	364	362	Imports	Lime
3,223	3,096	4,323	3,305	3,335	Exports	

EXTERNAL TRADE

Table 14 : Value of Overseas Trade in Selected Materials and Components for Constructional Use : Imports (cif) & Exports (fob)

United Kingdom		Current Prices (£'000)					
		2003	2004	2005	2006	2007	2008
All Products & Components	Imports	6,666,956	7,362,197	7,684,438	8,744,624	10,006,216	10,381,008
	Exports	4,188,166	4,390,277	4,579,743	5,096,672	5,378,347	5,910,571
	Balance	(2,478,790)	(2,971,920)	(3,104,695)	(3,647,952)	(4,627,869)	(4,470,437)
Wood sleepers (rail & tram)	Imports	5,103	5,981	7,296	6,844	7,907	10,683
	Exports	48	42	905	606	905	1,051
Building Stone : processed	Imports	135,000	152,257	173,779	206,066	243,019	250,807
	Exports	24,744	33,589	39,289	36,148	34,465	37,152
Slate Roofing Tiles	Imports	45,667	51,174	53,197	50,717	58,164	64,652
	Exports	8,268	10,211	11,093	5,479	6,941	7,603
Other Slate Products	Imports	4,403	9,759	10,235	10,641	8,963	8,172
	Exports	2,401	2,050	2,570	2,407	2,348	1,644
Portland Cement	Imports	51,676	63,269	56,472	52,408	59,422	65,571
	Exports	12,773	13,527	21,707	28,178	26,525	13,225
Other Cements	Imports	21,930	23,115	22,409	24,857	24,704	29,058
	Exports	20,891	25,576	23,786	32,358	31,335	29,826
Steel Sheet Piling	Imports	17,348	35,965	47,933	55,911	71,746	78,518
	Exports	33,029	31,360	14,808	18,609	20,205	32,009
Ready-Mixed Concrete	Imports	1	41	3	612	685	825
	Exports	3,784	4,930	9,073	10,116	10,378	12,568
Concrete Reinforcing Bars	Imports	108,833	106,989	121,965	150,492	181,794	207,084
	Exports	14,757	27,612	38,095	38,587	107,236	185,540
Mortars	Imports	4,369	4,927	4,739	5,247	6,225	6,800
	Exports	4,405	4,494	5,566	5,998	5,772	6,410
Clay Bricks	Imports	21,733	23,996	27,577	29,102	35,245	25,873
	Exports	6,909	10,000	12,082	13,541	10,591	7,009
Clay Roofing Tiles	Imports	5,474	8,720	9,485	10,285	10,347	9,995
	Exports	695	1,014	1,449	1,680	304	426
Clay Pipes	Imports	873	778	2,163	601	669	312
	Exports	11,752	9,188	8,446	6,262	5,518	5,775
Other Clay Products	Imports	2,187	4,886	5,240	5,886	5,602	6,620
	Exports	3,854	4,794	14,338	11,123	17,501	18,853
Concrete Blocks & Bricks	Imports	4,246	4,297	5,866	4,544	11,476	7,599
	Exports	20,431	21,242	25,598	26,814	27,319	21,050
Concrete Roofing Tiles	Imports	2,106	2,027	2,408	4,845	4,664	4,536
	Exports	8,752	7,880	7,285	7,857	7,013	3,757
Other Concrete Tiles & Paving	Imports	10,648	9,734	11,753	14,702	16,131	18,079
	Exports	35,251	32,144	35,168	33,692	38,281	34,758
Prefabricated Concrete Products	Imports	11,316	15,093	20,288	22,439	26,763	32,704
	Exports	12,117	25,010	29,374	28,936	23,241	18,501
Concrete Pipes	Imports	7,629	16,918	21,365	27,303	32,767	36,540
	Exports	27,068	28,674	25,566	27,010	32,536	31,412

Current Prices (£'000)

2007 Q4	2008 Q1	Q2	Q3	Q4		
2,501,102	2,545,025	2,809,471	2,667,816	2,358,696	Imports	All Products & Components
1,355,559	1,424,445	1,569,461	1,514,997	1,401,668	Exports	
(1,145,543)	(1,120,580)	(1,240,010)	(1,152,819)	(957,028)	Balance	
1,961	2,666	4,541	2,611	865	Imports	Wood sleepers (rail & tram)
496	340	133	160	418	Exports	
67,665	60,743	70,986	61,934	57,144	Imports	Building Stone : processed
7,702	7,672	12,496	10,020	6,964	Exports	
15,575	16,873	15,696	19,371	12,712	Imports	Slate Roofing Tiles
2,359	2,657	1,882	1,756	1,308	Exports	
1,756	2,757	2,131	1,654	1,630	Imports	Other Slate Products
453	441	387	466	350	Exports	
15,469	14,693	21,116	17,528	12,234	Imports	Portland Cement
5,692	2,851	6,574	2,172	1,628	Exports	
6,017	7,358	5,154	7,010	9,536	Imports	Other Cements
7,038	7,880	8,341	7,223	6,382	Exports	
15,209	18,950	21,568	18,370	19,630	Imports	Steel Sheet Piling
5,317	5,973	9,982	8,526	7,528	Exports	
84	190	155	149	331	Imports	Ready-Mixed Concrete
2,583	2,137	3,507	3,713	3,211	Exports	
32,486	42,970	52,676	76,608	34,830	Imports	Concrete Reinforcing Bars
28,534	27,914	42,877	73,779	40,970	Exports	
1,585	2,083	1,626	1,734	1,357	Imports	Mortars
1,333	1,601	1,682	1,509	1,618	Exports	
8,306	7,091	7,773	6,286	4,723	Imports	Clay Bricks
1,876	1,974	1,954	2,007	1,074	Exports	
2,307	2,894	2,642	2,299	2,160	Imports	Clay Roofing Tiles
93	120	141	117	48	Exports	
13	191	64	4	53	Imports	Clay Pipes
1,571	1,268	1,638	1,409	1,460	Exports	
1,446	1,509	2,057	1,764	1,290	Imports	Other Clay Products
6,257	7,507	4,513	5,490	1,343	Exports	
1,276	2,413	1,821	1,927	1,438	Imports	Concrete Blocks & Bricks
4,916	4,555	6,872	5,867	3,756	Exports	
1,439	1,389	999	1,094	1,054	Imports	Concrete Roofing Tiles
1,157	784	1,403	1,065	505	Exports	
3,903	6,339	5,042	3,851	2,847	Imports	Other Concrete Tiles & Paving
9,579	7,971	11,280	9,168	6,339	Exports	
4,498	8,345	9,580	7,809	6,970	Imports	Prefabricated Concrete Products
5,516	4,894	5,504	5,087	3,016	Exports	
8,851	8,111	10,279	9,818	8,332	Imports	Concrete Pipes
8,457	8,022	8,660	8,103	6,627	Exports	

EXTERNAL TRADE

**Table 14 : Value of Overseas Trade in Selected Materials and Components
for Constructional Use : Imports (cif) & Exports (fob)**

United Kingdom		Current Prices (£'000)					
		2003	2004	2005	2006	2007	2008
Products & Components (continued)							
Structural Units (steel)	Imports	229,855	275,573	308,125	361,685	526,139	547,922
	Exports	384,989	366,258	401,830	445,236	498,331	594,873
Structural Units (aluminium)	Imports	178,048	130,037	147,050	149,757	220,258	250,428
	Exports	63,415	72,732	72,730	81,708	81,777	98,289
Steel Tubes & Hollow Sections	Imports	69,092	89,647	94,193	117,181	142,421	156,630
	Exports	85,884	74,805	93,135	109,871	114,756	132,736
Bituminous Roofing Felt	Imports	16,314	17,279	19,559	21,082	25,626	29,843
	Exports	5,231	5,209	5,438	5,755	5,406	3,511
Other Asphalt products	Imports	7,240	8,476	9,488	8,449	9,965	9,886
	Exports	15,229	13,017	12,815	16,756	16,768	18,030
Mineral Insulating Materials	Imports	64,287	70,064	81,458	84,002	81,850	78,669
	Exports	78,231	99,812	115,427	137,321	139,360	132,676
Glass Fibre	Imports	1,977	1,782	1,241	2,666	1,482	1,185
	Exports	1,267	671	1,271	820	1,188	2,831
Fibre Cement Products	Imports	18,308	20,389	22,168	24,343	31,344	27,946
	Exports	9,040	6,578	7,402	6,618	6,667	7,690
Building Plasters	Imports	6,003	4,475	6,740	5,725	6,171	4,904
	Exports	2,946	5,263	6,324	8,121	7,623	6,589
Plasterboard	Imports	32,538	45,399	37,787	34,275	30,302	15,986
	Exports	13,411	19,103	16,724	24,262	19,797	18,390
Copper Pipes	Imports	117,993	153,381	152,310	212,455	217,861	229,285
	Exports	112,436	109,661	124,772	167,831	153,412	171,339
Lead Pipes & Fittings	Imports	33	113	115	168	93	17
	Exports	58	297	1,768	204	48	625
Zinc Pipes & Fittings	Imports	81	207	179	328	1,154	906
	Exports	2,909	4,231	3,989	5,446	7,166	6,023
Other Zinc Building Products	Imports	7,596	11,056	11,992	14,480	12,447	13,042
	Exports	12,155	15,822	21,052	23,873	20,945	21,960
Plastic Pipes	Imports	69,465	78,305	84,353	100,144	114,727	132,294
	Exports	141,043	152,224	170,733	187,793	205,332	211,662
Other Plastic Building Products	Imports	87,529	105,632	116,565	133,409	148,828	147,785
	Exports	84,704	93,460	99,630	100,498	115,008	116,965
Builders Ironmongery	Imports	355,324	377,439	389,610	452,335	498,372	504,006
	Exports	135,144	134,198	130,262	155,064	157,425	165,083
Nails & Screws	Imports	47,431	52,292	48,017	51,836	59,853	60,953
	Exports	9,401	10,480	14,171	15,229	12,553	12,833
Mastics, Putty	Imports	114,733	119,705	126,302	138,983	148,599	151,538
	Exports	84,926	84,732	82,529	95,347	103,998	118,965
Paints & Varnishes	Imports	286,155	292,933	297,691	315,962	339,581	352,886
	Exports	396,953	398,005	421,283	436,044	442,126	537,210

EXTERNAL TRADE

Current Prices (£'000)

2007 Q4	2008 Q1	Q2	Q3	Q4	Products & Components (continued)	
138,747	124,610	179,687	132,628	110,997	Imports	Structural Units (steel)
136,380	146,719	152,300	151,673	144,181	Exports	
49,001	59,072	62,024	52,432	76,900	Imports	Structural Units (aluminium)
19,274	27,681	20,885	20,979	28,744	Exports	
38,406	40,087	41,393	40,997	34,153	Imports	Steel Tubes & Hollow Sections
26,899	31,712	34,695	35,826	30,503	Exports	
6,480	7,131	7,757	8,184	6,771	Imports	Bituminous Roofing Felt
1,309	752	906	1,087	766	Exports	
2,353	2,114	2,522	2,969	2,281	Imports	Other Asphalt products
4,008	3,649	4,228	4,759	5,394	Exports	
18,431	21,025	21,024	20,176	16,444	Imports	Mineral Insulating Materials
34,561	32,826	34,839	35,054	29,957	Exports	
343	133	323	338	391	Imports	Glass Fibre
257	1,011	523	401	896	Exports	
9,081	7,444	7,830	6,969	5,703	Imports	Fibre Cement Products
1,731	1,826	1,840	2,383	1,641	Exports	
1,195	996	1,231	1,462	1,215	Imports	Building Plasters
1,617	1,598	1,850	1,516	1,625	Exports	
5,894	4,029	5,262	3,373	3,322	Imports	Plasterboard
4,415	4,505	5,137	5,165	3,583	Exports	
56,301	61,429	65,725	58,490	43,641	Imports	Copper Pipes
42,775	43,412	46,075	43,906	37,946	Exports	
2	0	1	12	4	Imports	Lead Pipes & Fittings
0	23	1	585	16	Exports	
375	283	240	226	157	Imports	Zinc Pipes & Fittings
1,425	1,758	1,828	1,523	914	Exports	
3,050	3,547	3,464	2,975	3,056	Imports	Other Zinc Building Products
5,487	6,009	6,477	5,144	4,330	Exports	
26,300	30,172	43,787	31,219	27,116	Imports	Plastic Pipes
49,689	58,670	55,117	49,299	48,576	Exports	
33,667	39,470	40,421	36,969	30,925	Imports	Other Plastic Building Products
27,294	29,027	32,585	29,987	25,366	Exports	
125,324	132,300	132,308	129,551	109,847	Imports	Builders Ironmongery
39,002	40,072	44,015	41,422	39,574	Exports	
14,844	15,619	17,512	13,503	14,319	Imports	Nails & Screws
2,734	2,893	3,708	3,723	2,509	Exports	
35,635	38,019	41,627	38,710	33,182	Imports	Mastics, Putty
25,564	26,961	32,902	32,777	26,325	Exports	
85,549	85,852	93,998	96,443	76,593	Imports	Paints & Varnishes
103,662	111,853	151,659	147,979	125,719	Exports	

EXTERNAL TRADE

Table 14 : Value of Overseas Trade in Selected Materials and Components for Constructional Use : Imports (cif) & Exports (fob)

United Kingdom			Current Prices (£'000)					
			2003	2004	2005	2006	2007	2008
Products & Components (continued)								
Unglazed Ceramic Tiles	Imports		33,515	34,386	48,736	54,270	64,691	70,939
	Exports		2,808	1,791	2,776	2,476	4,419	3,546
Glazed Ceramic Tiles	Imports		299,118	298,832	285,488	285,081	290,867	276,638
	Exports		13,441	16,168	17,216	21,444	20,555	17,779
Ceramic Sanitaryware	Imports		123,692	154,229	157,864	173,687	181,603	173,887
	Exports		36,213	44,780	48,004	54,232	58,228	53,221
Plastic Sanitaryware	Imports		69,624	91,025	98,663	105,586	126,471	119,496
	Exports		62,634	58,709	68,603	78,718	78,812	83,640
Metal Sanitaryware	Imports		105,958	108,114	110,304	123,202	139,821	141,937
	Exports		33,753	38,497	34,553	32,213	33,511	32,401
Flat Glass	Imports		68,138	58,092	53,410	55,900	71,800	62,107
	Exports		41,547	44,772	51,502	67,141	83,174	107,773
Other Glass Products	Imports		63,831	69,646	67,274	78,695	76,235	96,617
	Exports		29,438	30,008	25,895	31,631	37,712	40,295
Wood Veneers	Imports		37,263	34,826	35,328	40,586	38,516	39,325
	Exports		9,127	8,076	9,664	10,607	10,243	10,008
Wood Mouldings	Imports		58,579	67,497	69,452	79,514	73,907	64,519
	Exports		16,131	20,097	18,922	20,362	18,289	10,634
Wood Block Flooring	Imports		104,888	119,103	117,317	132,977	125,112	124,707
	Exports		10,487	9,312	8,086	8,448	5,464	6,033
Other Builder's Woodwork	Imports		64,807	70,930	78,356	93,870	109,022	100,893
	Exports		10,711	23,091	13,298	21,562	19,079	15,715
Windows (wood)	Imports		54,847	66,150	66,201	71,679	84,256	117,667
	Exports		23,010	21,961	5,693	9,466	12,879	10,222
Doors (wood)	Imports		167,738	169,146	164,036	191,637	205,159	207,455
	Exports		25,276	27,176	29,900	38,546	37,008	26,718
Doors & Windows (steel)	Imports		51,052	53,807	57,661	54,493	40,294	39,090
	Exports		21,455	18,376	20,146	21,231	25,825	26,295
Doors & Windows (aluminium)	Imports		69,492	57,010	61,542	68,235	65,654	63,694
	Exports		23,157	23,217	27,785	35,883	32,688	25,474
Doors & Windows (plastic)	Imports		27,110	25,981	27,227	41,045	39,460	39,141
	Exports		47,859	51,774	63,205	68,641	63,218	55,613
Cork Tiles	Imports		2,601	2,658	2,043	2,540	2,877	2,242
	Exports		1,199	1,885	1,662	2,878	1,611	1,641
Linoleum Floor Coverings	Imports		162,338	179,118	179,151	213,518	242,787	254,668
	Exports		180,172	172,688	178,385	188,215	195,735	224,401
Wallpaper	Imports		47,542	43,859	39,129	40,998	58,963	58,613
	Exports		71,002	56,789	55,456	54,868	67,165	73,521
Textile Wall Coverings	Imports		1,408	2,140	1,313	1,187	1,573	2,833
	Exports		1,159	678	484	373	598	499

EXTERNAL TRADE

Current Prices (£'000)

2007 Q4	2008 Q1	Q2	Q3	Q4	Products & Components (continued)	
16,916	17,723	18,787	18,216	16,213	Imports	Unglazed Ceramic Tiles
1,079	946	940	947	713	Exports	
69,573	77,585	78,597	63,370	57,086	Imports	Glazed Ceramic Tiles
4,461	4,823	4,412	4,331	4,213	Exports	
43,445	48,462	47,270	41,487	36,668	Imports	Ceramic Sanitaryware
14,266	13,221	13,969	13,878	12,153	Exports	
33,613	30,067	31,442	30,566	27,421	Imports	Plastic Sanitaryware
18,526	21,049	23,100	19,242	20,249	Exports	
33,488	37,917	36,905	37,208	29,907	Imports	Metal Sanitaryware
8,290	8,796	8,581	7,316	7,708	Exports	
17,320	14,796	14,658	15,581	17,072	Imports	Flat Glass
27,871	23,457	32,203	26,840	25,273	Exports	
18,215	21,034	23,955	25,136	26,492	Imports	Other Glass Products
11,204	10,254	9,539	9,847	10,655	Exports	
9,380	11,540	10,331	9,546	7,908	Imports	Wood Veneers
1,903	2,186	2,690	2,895	2,237	Exports	
15,718	19,527	17,935	15,667	11,390	Imports	Wood Mouldings
3,271	3,342	3,312	2,646	1,334	Exports	
37,171	34,482	35,001	30,602	24,622	Imports	Wood Block Flooring
1,529	1,466	1,637	1,560	1,370	Exports	
23,450	22,977	28,857	26,971	22,088	Imports	Other Builder's Woodwork
6,585	4,191	4,469	3,919	3,136	Exports	
25,628	28,737	33,164	30,026	25,740	Imports	Windows (wood)
2,334	2,600	3,278	2,254	2,090	Exports	
47,378	54,673	55,036	49,917	47,829	Imports	Doors (wood)
8,768	7,527	7,392	6,270	5,529	Exports	
9,224	8,859	9,616	11,224	9,391	Imports	Doors & Windows (steel)
6,748	6,922	7,576	6,426	5,371	Exports	
15,134	14,020	16,635	18,934	14,105	Imports	Doors & Windows (aluminium)
7,444	7,079	7,393	6,207	4,795	Exports	
10,324	10,487	11,204	9,238	8,212	Imports	Doors & Windows (plastic)
16,688	12,852	14,527	14,284	13,950	Exports	
678	579	549	604	510	Imports	Cork Tiles
368	328	380	579	354	Exports	
60,999	64,333	65,533	63,356	61,446	Imports	Linoleum Floor Coverings
50,217	52,006	60,310	58,043	54,042	Exports	
13,527	15,326	16,133	12,411	14,743	Imports	Wallpaper
18,148	17,059	19,736	18,464	18,262	Exports	
384	751	726	641	715	Imports	Textile Wall Coverings
208	244	84	89	82	Exports	

EXTERNAL TRADE

Table 14 : Value of Overseas Trade in Selected Materials and Components for Constructional Use : Imports (cif) & Exports (fob)

United Kingdom			Current Prices (£'000)					
			2003	2004	2005	2006	2007	2008
Products & Components (continued)								
Fitted Kitchens (assembled)	Imports		66,141	72,546	88,219	98,937	144,018	168,855
	Exports		22,753	28,543	38,899	34,261	35,322	24,039
Prefabricated Buildings (wood)	Imports		17,755	17,118	18,618	21,986	49,086	40,136
	Exports		28,363	10,276	14,075	22,603	27,807	14,339
Prefabricated Buildings (steel)	Imports		33,516	13,633	25,458	30,281	30,084	37,819
	Exports		33,369	16,629	12,814	42,880	27,464	46,086
Prefabricated Buildings (other)	Imports		30,775	21,723	52,602	67,587	73,414	74,063
	Exports		36,892	67,465	90,502	45,996	35,795	71,469
Mobile Homes	Imports		..	8,266	8,300	7,196	7,113	6,574
	Exports		..	7,752	12,000	8,573	11,291	7,249
Taps & Valves	Imports		193,386	218,022	209,659	265,657	277,803	314,169
	Exports		37,812	42,383	51,134	62,344	72,708	60,548
Pumps (circulating)	Imports		13,191	16,078	20,706	25,544	24,273	20,885
	Exports		19,429	22,176	24,986	28,408	27,131	26,672
Central Heating Boilers	Imports		371,004	386,508	433,200	473,692	493,840	545,341
	Exports		62,531	66,455	72,126	76,578	70,581	80,247
Radiators	Imports		156,028	185,745	173,673	193,948	197,513	180,944
	Exports		18,320	24,109	30,597	37,707	46,938	50,741
Water Heaters	Imports		58,673	63,348	64,514	75,238	88,897	105,516
	Exports		56,723	60,170	70,226	67,902	64,471	86,241
Space Heaters	Imports		121,118	135,387	139,190	120,030	107,581	108,259
	Exports		48,184	48,192	47,605	39,930	37,312	35,090
Fan Systems	Imports		122,017	132,616	134,485	152,829	198,750	161,466
	Exports		78,836	86,463	94,318	132,081	94,651	113,638
Air Conditioning Equipment	Imports		330,246	389,070	360,514	379,150	514,454	643,259
	Exports		191,466	255,124	218,235	201,257	231,145	265,243
Air Purifying Equipment	Imports		28,647	30,072	37,950	31,440	29,827	41,245
	Exports		99,171	101,710	108,350	114,378	120,707	137,811
Hand Driers	Imports		2,916	3,307	3,887	5,009	4,057	7,624
	Exports		1,238	1,905	1,177	1,036	1,648	1,021
Meters	Imports		18,767	17,875	20,971	25,666	24,501	24,152
	Exports		22,270	23,191	22,700	25,024	26,215	42,919
Plugs & Sockets	Imports		155,233	170,877	183,550	232,658	231,664	269,102
	Exports		104,404	119,250	106,743	169,345	148,672	152,965
Electrical Wires	Imports		640,997	770,132	789,156	1,028,495	1,303,906	1,236,014
	Exports		420,550	419,339	392,062	458,568	521,508	552,731
Electrical Insulators	Imports		26,827	33,557	32,793	37,729	30,478	34,931
	Exports		70,687	54,632	38,222	28,858	33,830	32,536
Lamps & Fittings	Imports		321,327	354,391	354,174	392,782	449,230	460,784
	Exports		155,404	168,398	179,800	195,049	221,180	236,277
Fire & Security Alarms	Imports		97,101	131,901	140,511	153,055	144,891	134,618
	Exports		103,585	118,660	130,795	150,929	154,519	180,551
Lifts & Escalators	Imports		77,203	89,366	112,695	104,250	118,401	128,243
	Exports		24,301	17,717	11,664	24,833	43,143	19,877

EXTERNAL TRADE

Current Prices (£'000)

2007 Q4	2008 Q1	Q2	Q3	Q4	Products & Components (continued)	
47,160	46,511	45,871	42,721	33,752	Imports	Fitted Kitchens (assembled)
7,832	6,355	6,845	6,062	4,777	Exports	
11,795	10,634	12,648	8,863	7,991	Imports	Prefabricated Buildings (wood)
5,237	2,906	3,304	5,083	3,046	Exports	
5,335	11,332	10,250	8,956	7,281	Imports	Prefabricated Buildings (steel)
9,937	9,000	16,853	12,024	8,209	Exports	
17,064	15,952	27,951	17,494	12,666	Imports	Prefabricated Buildings (other)
8,316	17,153	12,977	14,378	26,961	Exports	
811	1,704	2,699	1,250	921	Imports	Mobile Homes
2,291	1,682	1,177	2,736	1,654	Exports	
69,562	74,209	88,183	82,521	69,256	Imports	Taps & Valves
16,883	15,248	15,448	16,367	13,485	Exports	
7,999	5,826	5,653	5,221	4,185	Imports	Pumps (circulating)
7,470	6,057	5,794	7,760	7,061	Exports	
138,798	131,257	131,756	131,999	150,329	Imports	Central Heating Boilers
19,055	21,905	21,507	18,502	18,333	Exports	
51,466	46,679	48,901	41,974	43,390	Imports	Radiators
14,835	16,929	16,629	8,926	8,257	Exports	
22,250	22,750	26,667	28,222	27,877	Imports	Water Heaters
15,378	17,856	21,061	24,864	22,460	Exports	
36,807	21,428	19,813	30,283	36,735	Imports	Space Heaters
10,834	8,273	7,500	8,939	10,378	Exports	
36,338	39,557	48,069	38,734	35,106	Imports	Fan Systems
22,305	23,198	29,656	29,063	31,721	Exports	
110,801	126,613	171,677	192,252	152,717	Imports	Air Conditioning Equipment
50,053	63,290	73,876	64,682	63,395	Exports	
8,063	7,957	10,486	11,145	11,657	Imports	Air Purifying Equipment
31,208	33,263	41,725	30,847	31,976	Exports	
1,247	1,284	1,133	2,092	3,115	Imports	Hand Driers
195	141	380	176	324	Exports	
5,012	4,670	5,598	6,743	7,141	Imports	Meters
7,455	8,474	9,802	11,220	13,423	Exports	
58,522	66,718	69,490	68,236	64,658	Imports	Plugs & Sockets
36,665	38,869	40,155	38,192	35,749	Exports	
342,926	306,387	332,852	317,742	279,033	Imports	Electrical Wires
138,576	149,177	144,460	130,990	128,104	Exports	
6,506	7,450	9,776	8,372	9,333	Imports	Electrical Insulators
6,977	8,119	8,813	7,413	8,191	Exports	
114,225	114,925	107,683	121,949	116,227	Imports	Lamps & Fittings
56,711	57,441	57,667	62,014	59,155	Exports	
34,350	35,859	40,486	32,264	26,009	Imports	Fire & Security Alarms
36,800	41,734	41,618	42,571	54,628	Exports	
31,677	30,552	35,454	38,634	23,603	Imports	Lifts & Escalators
11,630	7,508	5,288	3,326	3,755	Exports	

© Crown copyright 2009.
Published under licence from the Controller of Her Majesty's Stationery Office.
Applications for reproductions should be made in writing to :-

The Copyright Unit, Her Majesty's Stationery Office, St. Clements House,
2-16 Colegate, Norwich NR3 1BQ

March 2009

URN 09 / 313b

ISSN 0264-6188